

PROTEASOME BETA 9 RABBIT MAB

Cat.#: N262766

Product Name: Anti-Proteasome beta 9 Rabbit Monoclonal Antibody

Synonyms: Beta1i; LMP2; PSMB 9; PSMB6i; PSMB9; RING12

UNIPROT ID: P28065

Background: The proteasome is a multicatalytic proteinase complex which is characterized by its ability to cleave peptides with Arg, Phe, Tyr, Leu, and Glu adjacent to the leaving group at neutral or slightly basic pH. The proteasome has an ATP-dependent proteolytic activity.

Immunogen: A synthetic peptide of human Proteasome 20S LMP2

Applications: WB, ICC/IF

Recommended Dilutions: WB: 1/500-1/1000 IF: 1/50-1/200

Host Species: Rabbit

Clonality: Rabbit Monoclonal

Clone ID: R04-9C8

MW: Calculated MW: 23 kDa; Observed MW: 23 kDa

Isotype: IgG

Purification: Affinity Purified

Species Reactivity: Human, Mouse, Rat

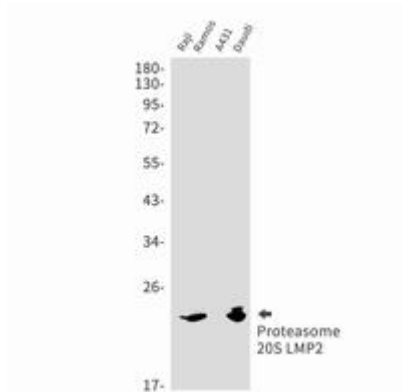
Conjugation: Unconjugated

Modification: Unmodified

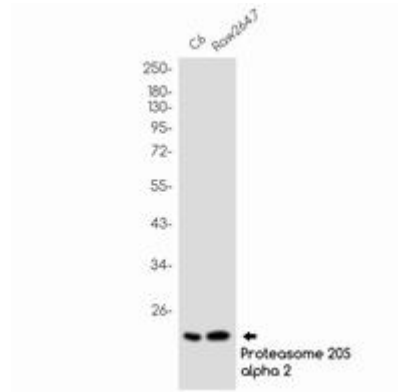
Constituents: PBS (without Mg²⁺ and Ca²⁺), pH 7.3 containing 50% glycerol, 0.5% BSA and 0.02% sodium azide

Research Areas: Cell Biology

Storage & Shipping: Store at -20°C. Avoid repeated freezing and thawing



Western blot analysis of Proteasome 20S LMP2 in Raji, Ramos, A431, Daudi lysates using Proteasome 20S LMP2 antibody.



Western blot analysis of Proteasome 20S LMP2 in C6, Raw264.7 lysates using Proteasome beta 9 antibody.