

PROTEIN CASP RABBIT MAB

Cat.#: N263509

Product Name: Anti-Protein CASP Rabbit Monoclonal Antibody

Synonyms: CDP; CUX; p75; CASP; CDPI; COY1; Clox; GDDI; p100; p110; p200; CUTLI; GOLIM6; CDP/Cut; Cux/CDP; Nbla10317

UNIPROT ID: Q13948

Background: May be involved in intra-Golgi retrograde transport.

Immunogen: Recombinant protein of human Protein CASP

Applications: WB, ICC/IF, IP

Recommended Dilutions: WB: 1/500-1/1000 IF: 1/50-1/200 IP: 1/20

Host Species: Rabbit

Clonality: Rabbit Monoclonal

Clone ID: R03-5F8

MW: Calculated MW: 77 kDa; Observed MW: 77 kDa

Isotype: IgG

Purification: Affinity Purified

Species Reactivity: Human, Mouse, Rat

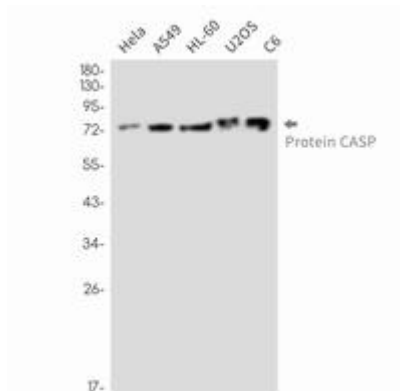
Conjugation: Unconjugated

Modification: Unmodified

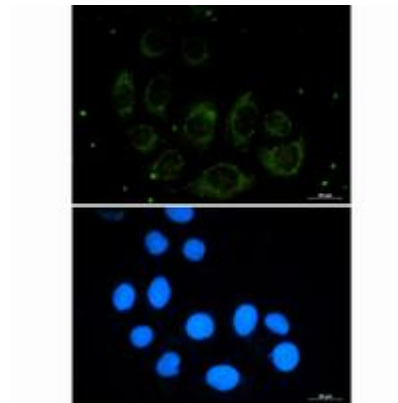
Constituents: PBS (without Mg²⁺ and Ca²⁺), pH 7.3 containing 50% glycerol, 0.5% BSA and 0.02% sodium azide

Research Areas: -

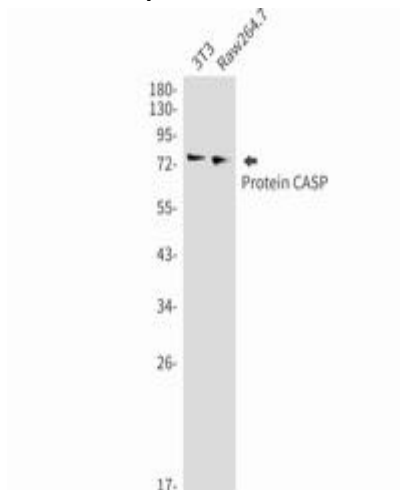
Storage & Shipping: Store at -20°C. Avoid repeated freezing and thawing



Western blot analysis of Protein CASP in HeLa, A549, HL-60, U2OS, C6 lysates using Protein CASP antibody



Immunocytochemistry analysis of Protein CASP (green) in A549 using Protein CASP antibody, and DAPI (blue).



Western blot analysis of Protein CASP in 3T3, Raw264.7 lysates using Protein CASP antibody.