

## PRPF31 RABBIT MAB

**Cat.#:** N261573

**Product Name:** Anti-PRPF31 Rabbit Monoclonal Antibody

**Synonyms:** Protein 61K; hPrp31; U4/U6 snRNP 61 kDa protein

**UNIPROT ID:** Q8WWY3

**Background:** Involved in pre-mRNA splicing as component of the spliceosome.

**Immunogen:** A synthetic peptide of human PRPF31

**Applications:** WB, ICC/IF

**Recommended Dilutions:** WB: 1/500-1/1000 IF: 1/50-1/200

**Host Species:** Rabbit

**Clonality:** Rabbit Monoclonal

**Clone ID:** R01-7F1

**MW:** Calculated MW: 55 kDa; Observed MW: 55 kDa

**Isotype:** IgG

**Purification:** Affinity Purified

**Species Reactivity:** Human, Mouse, Rat

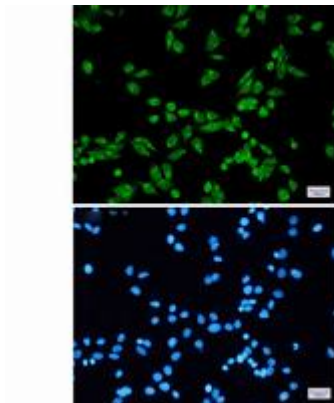
**Conjugation:** Unconjugated

**Modification:** Unmodified

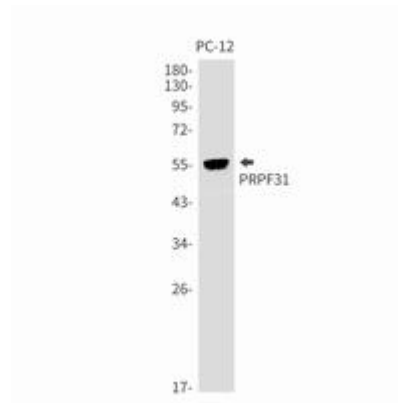
**Constituents:** PBS (without Mg<sup>2+</sup> and Ca<sup>2+</sup>), pH 7.3 containing 50% glycerol, 0.5% BSA and 0.02% sodium azide

**Research Areas:** Epigenetics and Nuclear Signaling

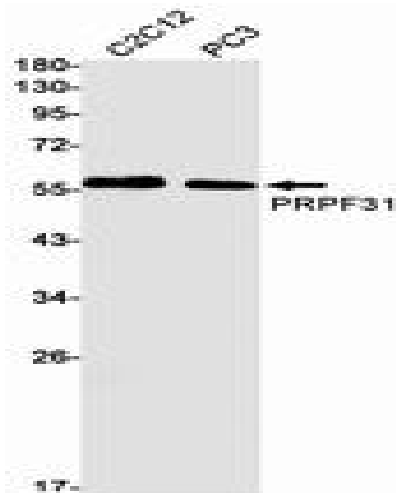
**Storage & Shipping:** Store at -20°C. Avoid repeated freezing and thawing



Immunocytochemistry analysis of PRPF31 (green) in HeLa using PRPF31 antibody, and DAPI (blue)



Western blot analysis of PRPF31 in PC-12 lysates using PRPF31 antibody.



Western blot analysis of PRPF31 in C2C12, PC-3 lysates using PRPF31 antibody.