

PRPH RABBIT PAB

Cat.#: S216723

Product Name: Anti-PRPH Rabbit Polyclonal Antibody

Synonyms: NEF4; PRPH1

UNIPROT ID: P41219 (Gene Accession - BC032703)

Background: This gene encodes a cytoskeletal protein found in neurons of the peripheral nervous system. The encoded protein is a type III intermediate filament protein with homology to other cytoskeletal proteins such as desmin, and is a different protein than the peripherin found in photoreceptors. Mutations in this gene have been associated with susceptibility to amyotrophic lateral sclerosis.

Immunogen: Fusion protein of human PRPH

Applications: ELISA, IHC

Recommended Dilutions: IHC: 50–200; ELISA: 5000–10000

Host Species: Rabbit

Clonality: Rabbit Polyclonal

Isotype: Immunogen-specific rabbit IgG

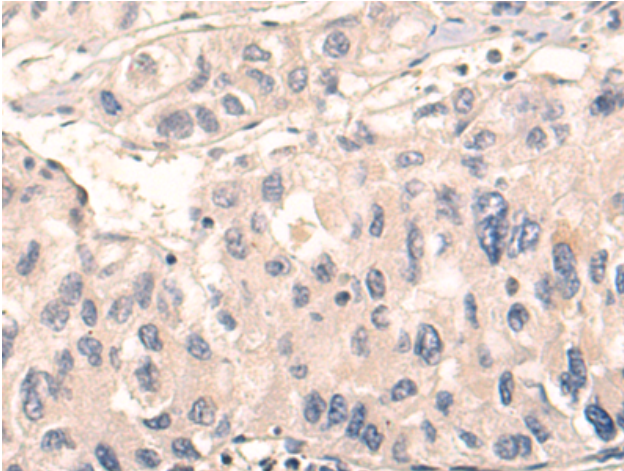
Purification: Antigen affinity purification

Species Reactivity: Human, Mouse, Rat

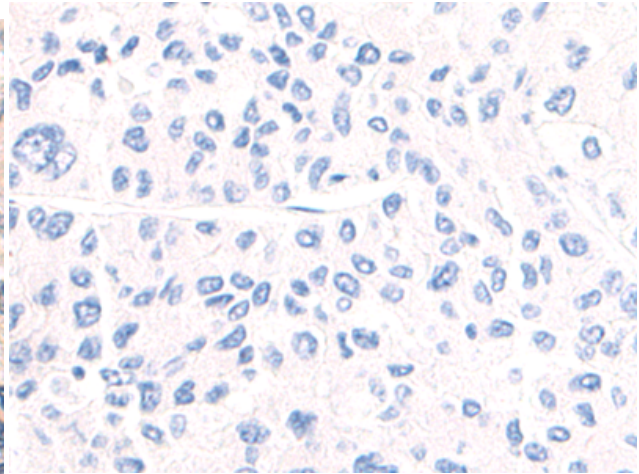
Constituents: PBS (without Mg²⁺ and Ca²⁺), pH 7.4, 150 mM NaCl, 0.05% Sodium Azide and 40% glycerol

Research Areas: Signal Transduction, Neuroscience

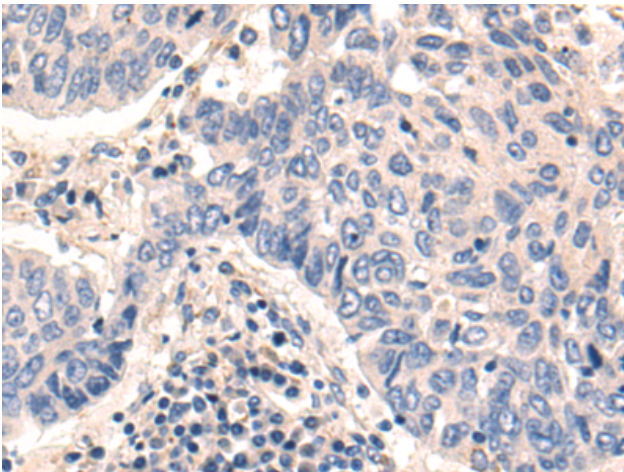
Storage & Shipping: Store at -20°C. Avoid repeated freezing and thawing



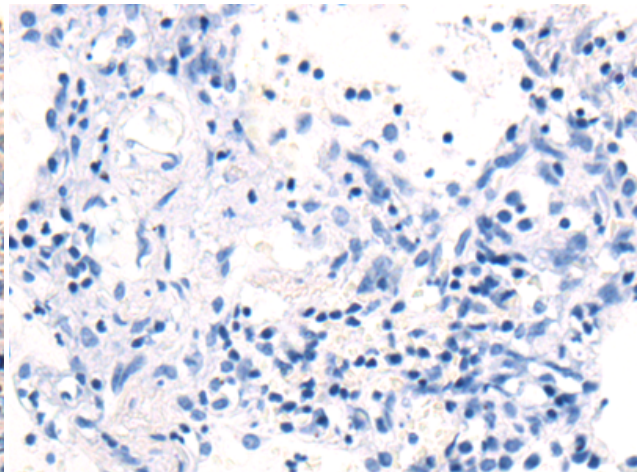
Immunohistochemistry analysis of paraffin embedded Human liver cancer tissue using 216723 (PRPH Antibody) at a dilution of 1/55 (Cytoplasm).



In comparison with the IHC on the left, the same paraffin-embedded Human liver cancer tissue is first treated with the fusion protein and then with 216723 (Anti-PRPH Antibody) at dilution 1/55.



The image on the left is immunohistochemistry of paraffin-embedded Human thyroid cancer tissue using 216723 (Anti-PRPH Antibody) at a dilution of 1/55.



In comparison with the IHC on the left, the same paraffin-embedded Human thyroid cancer tissue is first treated with fusion protein and then with D221127 (Anti-PRPH Antibody) at dilution 1/55.