

## PRSS50 RABBIT PAB

**Cat.#:** S215386

**Product Name:** Anti-PRSS50 Rabbit Polyclonal Antibody

**Synonyms:** CT20; TSP50

**UNIPROT ID:** Q9UI38 (Gene Accession - NP\_037402 )

**Background:** May be involved in proteolysis through its threonine endopeptidase activity.

**Immunogen:** Synthetic peptide of human PRSS50

**Applications:** ELISA, IHC

**Recommended Dilutions:** IHC: 40-200; ELISA: 5000-10000

**Host Species:** Rabbit

**Clonality:** Rabbit Polyclonal

**Isotype:** Immunogen-specific rabbit IgG

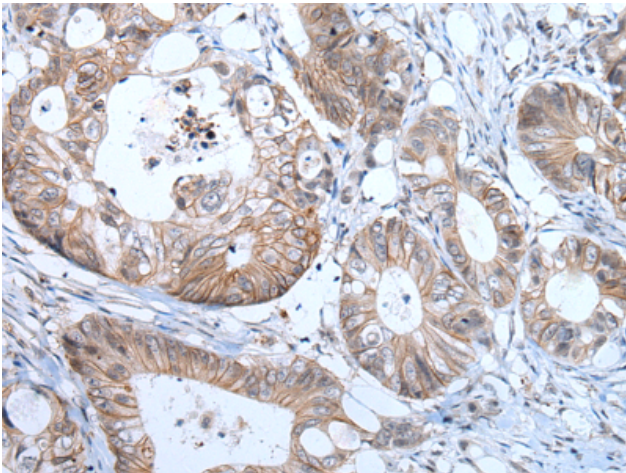
**Purification:** Antigen affinity purification

**Species Reactivity:** Human

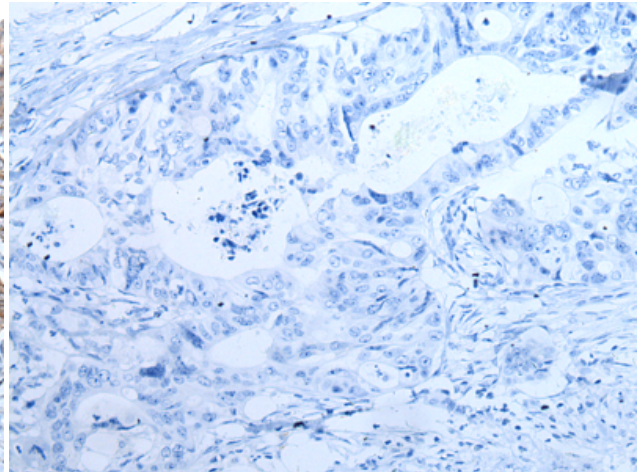
**Constituents:** PBS (without Mg<sup>2+</sup> and Ca<sup>2+</sup>), pH 7.4, 150 mM NaCl, 0.05% Sodium Azide and 40% glycerol

**Research Areas:** Cancer, Cell Biology

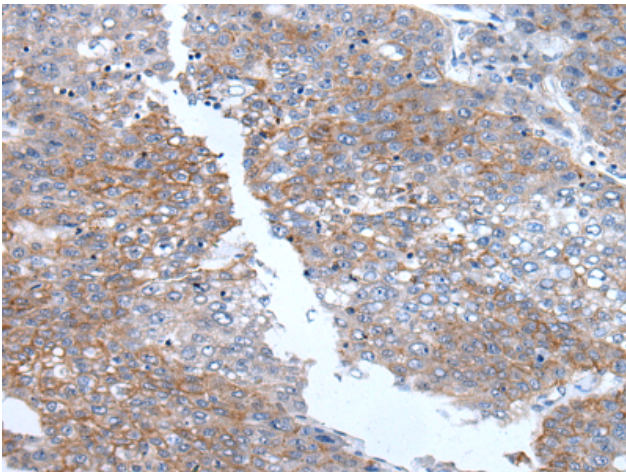
**Storage & Shipping:** Store at -20°C. Avoid repeated freezing and thawing



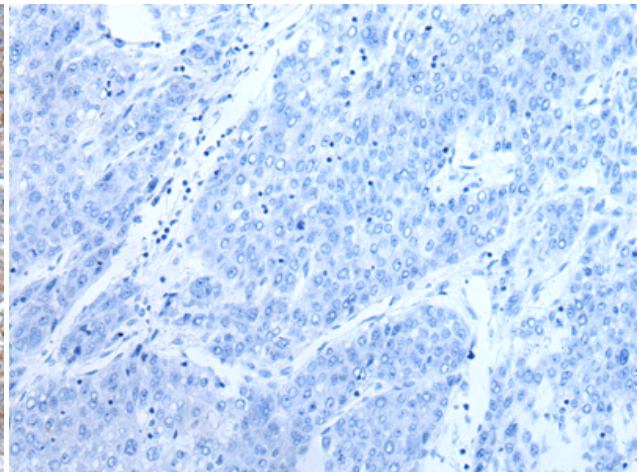
Immunohistochemistry analysis of paraffin embedded Human colorectal cancer tissue using 215386 (PRSS50 Antibody) at a dilution of 1/65 (Cytoplasm and Cell membrane).



In comparison with the IHC on the left, the same paraffin-embedded Human colorectal cancer tissue is first treated with the synthetic peptide and then with 215386 (Anti-PRSS50 Antibody) at dilution 1/65.



The image on the left is immunohistochemistry of paraffin-embedded Human liver cancer tissue using 215386 (Anti-PRSS50 Antibody) at a dilution of 1/65.



In comparison with the IHC on the left, the same paraffin-embedded Human liver cancer tissue is first treated with synthetic peptide and then with D163300 (Anti-PRSS50 Antibody) at dilution 1/65.