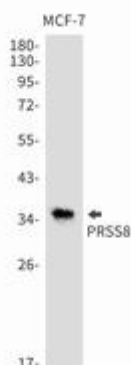


PRSS8 RABBIT MAB**Cat.#:** N262773**Product Name:** Anti-PRSS8 Rabbit Monoclonal Antibody**Synonyms:** CAPI; PROSTASIN**UNIPROT ID:** Q16651**Background:** Possesses a trypsin-like cleavage specificity with a preference for poly-basic substrates. Stimulates epithelial sodium channel (ENaC) activity through activating cleavage of the gamma subunits (SCNN1G).**Immunogen:** Recombinant protein of human PRSS8**Applications:** WB,IP**Recommended Dilutions:** WB: 1/500-1/1000 IP: 1/20**Host Species:** Rabbit**Clonality:** Rabbit Monoclonal**Clone ID:** R03-4J4**MW:** Calculated MW: 36 kDa; Observed MW: 36 kDa**Isotype:** IgG**Purification:** Affinity Purified**Species Reactivity:** Human**Conjugation:** Unconjugated**Modification:** Unmodified**Constituents:** PBS (without Mg²⁺ and Ca²⁺), pH 7.3 containing 50% glycerol, 0.5% BSA and 0.02% sodium azide**Research Areas:** Cell Biology**Storage & Shipping:** Store at -20°C. Avoid repeated freezing and thawing

Western blot analysis of PRSS8 in MCF-7 lysates using PRSS8 antibody.

