

PRTFDC1 RABBIT PAB

Cat.#: S218191

Product Name: Anti-PRTFDC1 Rabbit Polyclonal Antibody

Synonyms: HHGP

UNIPROT ID: Q9NRG1 (Gene Accession - BC008662)

Background: Enables protein homodimerization activity. Predicted to be involved in purine ribonucleoside salvage.

Immunogen: Fusion protein of human PRTFDC1

Applications: ELISA, WB, IHC

Recommended Dilutions: IHC: 150-300;WB: 200-1000;ELISA: 5000-10000

Host Species: Rabbit

Clonality: Rabbit Polyclonal

Isotype: Immunogen-specific rabbit IgG

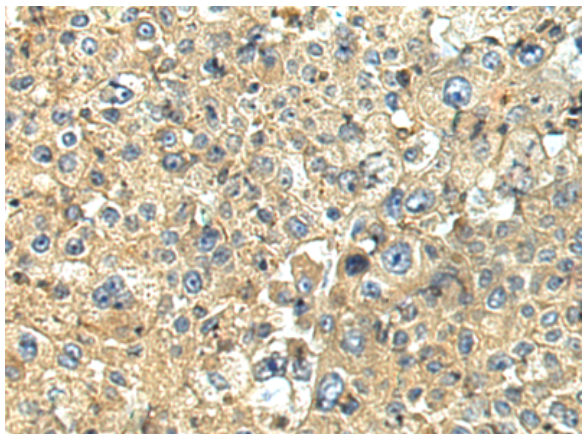
Purification: Antigen affinity purification

Species Reactivity: Human

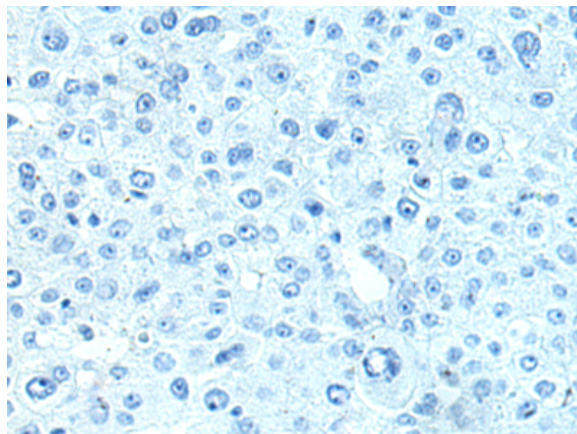
Constituents: PBS (without Mg²⁺ and Ca²⁺), pH 7.4, 150 mM NaCl, 0.05% Sodium Azide and 40% glycerol

Research Areas: Epigenetics and Nuclear Signaling

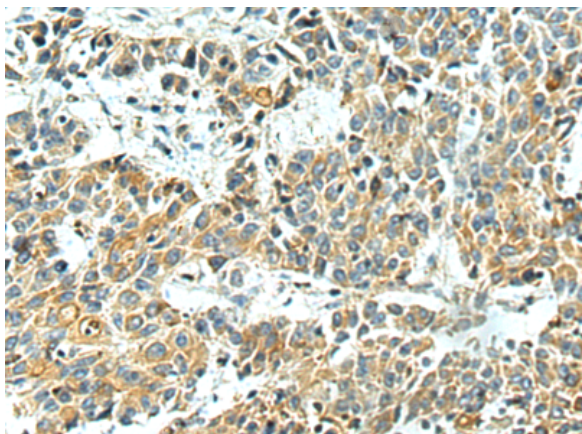
Storage & Shipping: Store at -20°C. Avoid repeated freezing and thawing



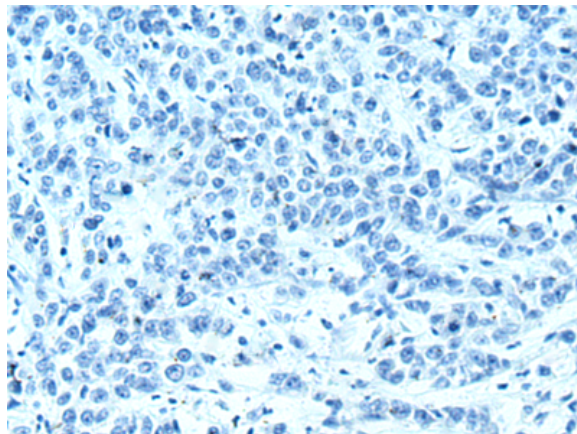
Immunohistochemistry analysis of paraffin embedded Human liver cancer tissue using 218191(PRTFDC1 Antibody) at a dilution of 1/150(Cytoplasm).



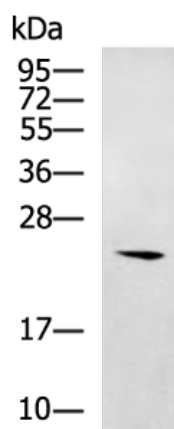
In comparison with the IHC on the left, the same paraffin-embedded Human liver cancer tissue is first treated with the fusion protein and then with 218191(Anti-PRTFDC1 Antibody) at dilution 1/150.



The image on the left is immunohistochemistry of paraffin-embedded Human colorectal cancer tissue using 218191(Anti-PRTFDC1 Antibody) at a dilution of 1/150.



In comparison with the IHC on the left, the same paraffin-embedded Human colorectal cancer tissue is first treated with fusion protein and then with D223908(Anti-PRTFDC1 Antibody) at dilution 1/150.



Gel: 12%SDS-PAGE, Lysate: 40 µg;
Lane: Human ovarian cancer (granulosa cell tumor) tissue lysate;
Primary antibody: 218191(PRTFDC1 Antibody) at dilution 1/300;
Secondary antibody: HRP-conjugated Goat anti rabbit IgG at 1/5000 dilution;
Exposure time: 90 seconds



Product Description

Pioneering GTPase and Oncogene Product Development since 2010
