

## PRXL2B RABBIT PAB

**Cat.#:** S212142

**Product Name:** Anti-PRXL2B Rabbit Polyclonal Antibody

**Synonyms:** Clorf93; FAM213B

**UNIPROT ID:** Q8TBF2 (Gene Accession - BC022547 )

**Background:** Catalyzes the reduction of prostaglandin-ethanolamide H2 (prostamide H2) to prostamide F(2alpha) with NADPH as proton donor. Also able to reduce prostaglandin H2 to prostaglandin F(2alpha) (By similarity).

**Immunogen:** Fusion protein of human PRXL2B

**Applications:** ELISA, WB, IHC

**Recommended Dilutions:** IHC: 40-200;WB: 200-1000;ELISA: 5000-10000

**Host Species:** Rabbit

**Clonality:** Rabbit Polyclonal

**Isotype:** Immunogen-specific rabbit IgG

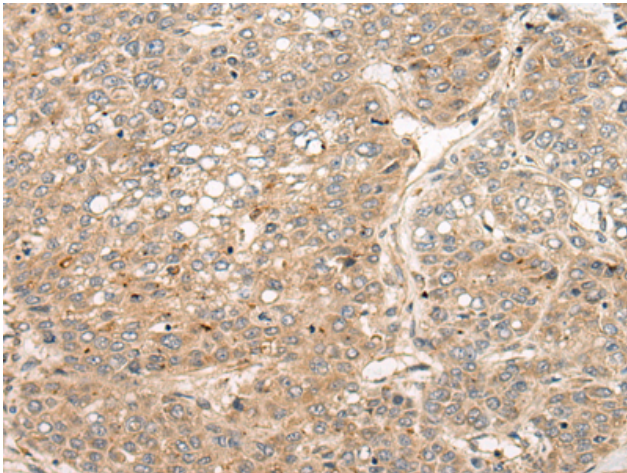
**Purification:** Antigen affinity purification

**Species Reactivity:** Human, Mouse, Rat

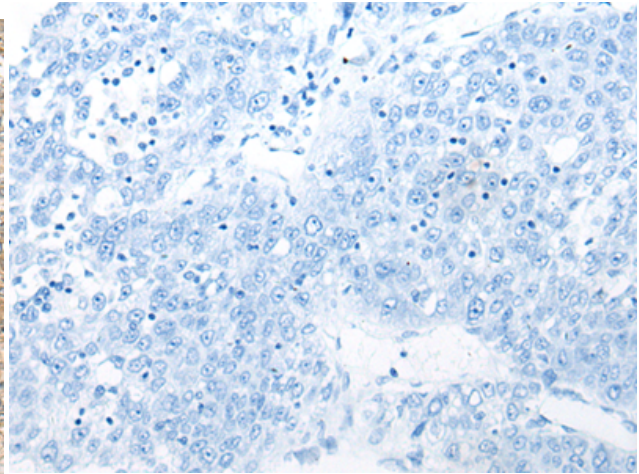
**Constituents:** PBS (without Mg<sup>2+</sup> and Ca<sup>2+</sup>), pH 7.4, 150 mM NaCl, 0.05% Sodium Azide and 40% glycerol

**Research Areas:** Cell Biology

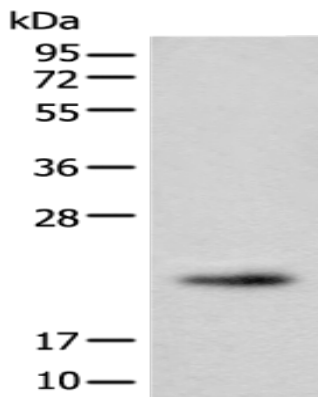
**Storage & Shipping:** Store at -20°C. Avoid repeated freezing and thawing



Immunohistochemistry analysis of paraffin embedded Human liver cancer tissue using 212142(PRXL2B Antibody) at a dilution of 1/55(Cytoplasm).



In comparison with the IHC on the left, the same paraffin-embedded Human liver cancer tissue is first treated with the fusion protein and then with 212142(Anti-PRXL2B Antibody) at dilution 1/55.



Gel: 12%SDS-PAGE, Lysate: 40  $\mu$ g;  
Lane: Human fetal brain tissue lysate;  
Primary antibody: 212142(PRXL2B Antibody) at dilution 1/550;  
Secondary antibody: Goat anti rabbit IgG at 1/8000 dilution;  
Exposure time: 30 seconds