

## PSGR RABBIT PAB

**Cat.#:** N225500

**Product Name:** Anti-PSGR Rabbit pAb

**Synonyms:** PSGR; HPRAJ; OR52A2; OR51E3P

**UNIPROT ID:** Q9H255

**Background:** Probable G protein-coupled receptor that is activated by the short chain fatty acids (SCFA) acetate and propionate. In response to SCFA, may positively regulate renin secretion and increase blood pressure (PubMed:23401498). May also be activated by steroid hormones and regulate cell proliferation (PubMed:19389702). May also function as an olfactory receptor being activated by beta-ionone (PubMed:19389702).

**Immunogen:** The antiserum was produced against synthesized peptide derived from human OR51E2. AA range:221-270

**Applications:** WB,ICC/IF,ELISA

**Recommended Dilutions:** WB: 1/500-1/1000 IF: 1/50-1/200 ELISA: 1/10000

**Host Species:** Rabbit

**Clonality:** Rabbit Polyclonal

**Clone ID:** -

**MW:** Calculated MW: 35 kDa; Observed MW: 35 kDa

**Isotype:** IgG

**Purification:** Affinity Chromatography

**Species Reactivity:** Human,Rat

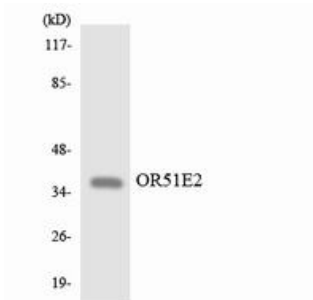
**Conjugation:** Unconjugated

**Modification:** Unmodified

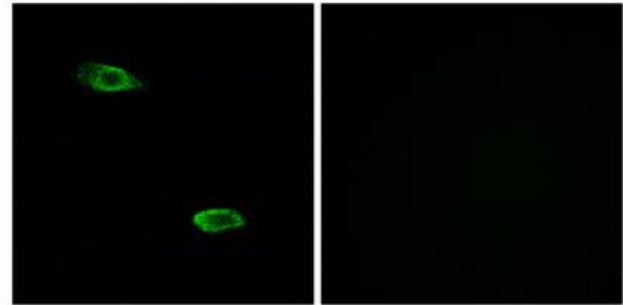
**Constituents:** PBS (without Mg<sup>2+</sup> and Ca<sup>2+</sup>), pH 7.3 containing 50% glycerol, 0.5% BSA and 0.02% sodium azide

**Research Areas:** Neuroscience

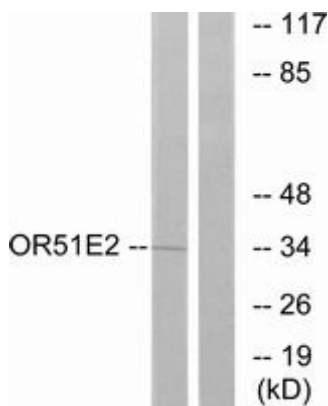
**Storage & Shipping:** Store at -20°C. Avoid repeated freezing and thawing



Western blot analysis of PSGR in HepG2 lysates using PSGR antibody



Immunofluorescence analysis of PSGR in A549 using PSGR antibody. Sample with blocking peptide on the right.



Western blot analysis of PSGR in Jurkat lysates using PSGR antibody. The lane on the right is blocked with the synthesized peptide.