

PSMA3 RABBIT PAB

Cat.#: S218847

Product Name: Anti-PSMA3 Rabbit Polyclonal Antibody

Synonyms: HC8; PSC3

UNIPROT ID: P25788 (Gene Accession - BC005265)

Background: The proteasome is a multicatalytic proteinase complex with a highly ordered ring-shaped 20S core structure. The core structure is composed of 4 rings of 28 non-identical subunits; 2 rings are composed of 7 alpha subunits and 2 rings are composed of 7 beta subunits. Proteasomes are distributed throughout eukaryotic cells at a high concentration and cleave peptides in an ATP/ubiquitin-dependent process in a non-lysosomal pathway. An essential function of a modified proteasome, the immunoproteasome, is the processing of class I MHC peptides. This gene encodes a member of the peptidase T1A family, that is a 20S core alpha subunit. Two alternative transcripts encoding different isoforms have been identified.

Immunogen: Fusion protein of human PSMA3

Applications: ELISA, WB, IHC

Recommended Dilutions: IHC: 50-300;WB: 500-2000;ELISA: 5000-10000

Host Species: Rabbit

Clonality: Rabbit Polyclonal

Isotype: Immunogen-specific rabbit IgG

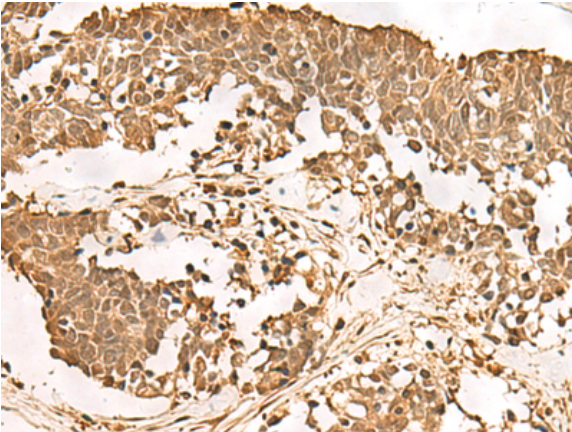
Purification: Antigen affinity purification

Species Reactivity: Human, Mouse, Rat

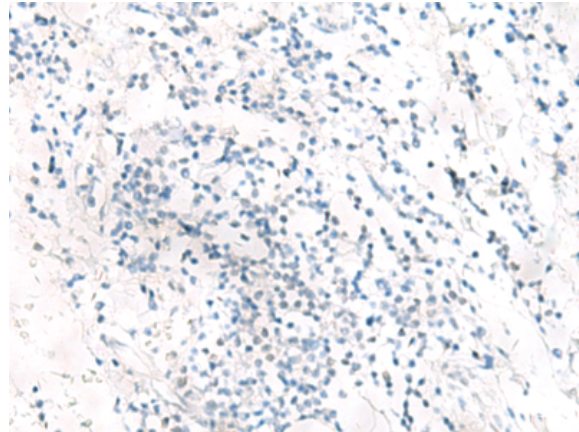
Constituents: PBS (without Mg²⁺ and Ca²⁺), pH 7.4, 150 mM NaCl, 0.05% Sodium Azide and 40% glycerol

Research Areas: Cell Biology

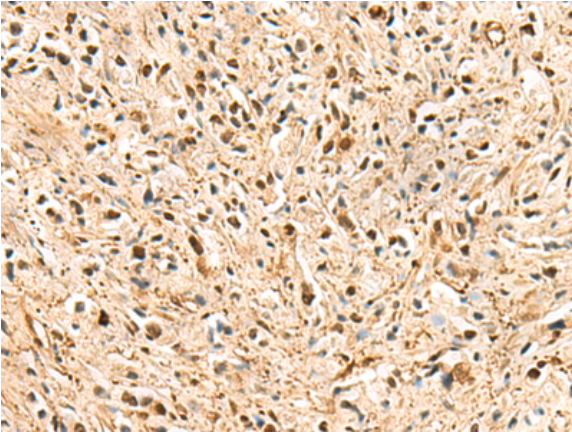
Storage & Shipping: Store at -20°C. Avoid repeated freezing and thawing



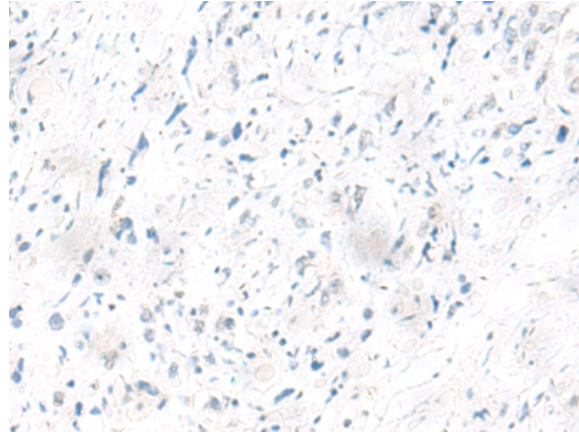
Immunohistochemistry analysis of paraffin embedded Human lung cancer tissue using 218847(PSMA3 Antibody) at a dilution of 1/50(Cytoplasm and Nucleus).



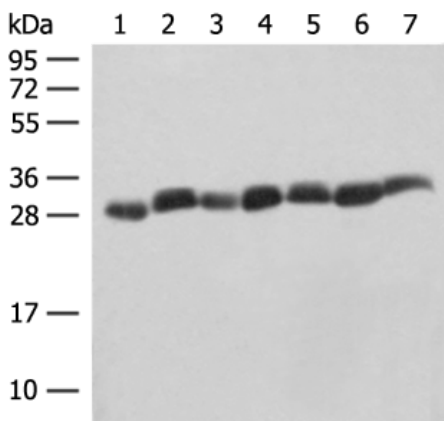
In comparison with the IHC on the left, the same paraffin-embedded Human lung cancer tissue is first treated with the fusion protein and then with 218847(Anti-PSMA3 Antibody) at dilution 1/50.



The image on the left is immunohistochemistry of paraffin-embedded Human prostate cancer tissue using 218847(Anti-PSMA3 Antibody) at a dilution of 1/50.



In comparison with the IHC on the left, the same paraffin-embedded Human prostate cancer tissue is first treated with fusion protein and then with D225359(Anti-PSMA3 Antibody) at dilution 1/50.



Gel: 12%SDS-PAGE, Lysate: 40 µg;
Lane 1-7: HeLa cell, Mouse spleen tissue, Mouse liver tissue, PC3 cell, HL60 cell, A549 cell, NIH/3T3 cell lysates;
Primary antibody: 218847(PSMA3 Antibody) at dilution 1/350;
Secondary antibody: Goat anti rabbit IgG at 1/8000 dilution;
Exposure time: 10 seconds



Product Description

Pioneering GTPase and Oncogene Product Development since 2010
