

PSMC5 RABBIT MAB

Cat.#: N262779

Product Name: Anti-PSMC5 Rabbit Monoclonal Antibody

Synonyms: S8; p45; SUG1; SUG-1; TBP10; TRIP1; p45/SUG

UNIPROT ID: P62195

Background: Component of the 26S proteasome, a multiprotein complex involved in the ATP-dependent degradation of ubiquitinated proteins. This complex plays a key role in the maintenance of protein homeostasis by removing misfolded or damaged proteins, which could impair cellular functions, and by removing proteins whose functions are no longer required. Therefore, the proteasome participates in numerous cellular processes, including cell cycle progression, apoptosis, or DNA damage repair. PSMC5 belongs to the heterohexameric ring of AAA (ATPases associated with diverse cellular activities) proteins that unfolds ubiquitinated target proteins that are concurrently translocated into a proteolytic chamber and degraded into peptides.

Immunogen: A synthetic peptide of human PSMC5

Applications: WB, ICC/IF, IP

Recommended Dilutions: WB: 1/500-1/1000 IF: 1/50-1/200 IP: 1/20

Host Species: Rabbit

Clonality: Rabbit Monoclonal

Clone ID: R05-2B6

MW: Calculated MW: 46 kDa; Observed MW: 46 kDa

Isotype: IgG

Purification: Affinity Purified

Species Reactivity: Human, Mouse, Rat

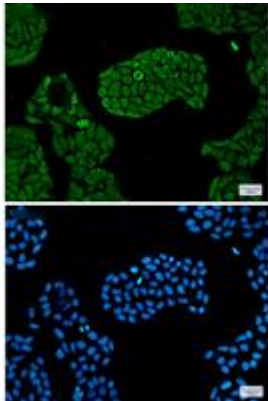
Conjugation: Unconjugated

Modification: Unmodified

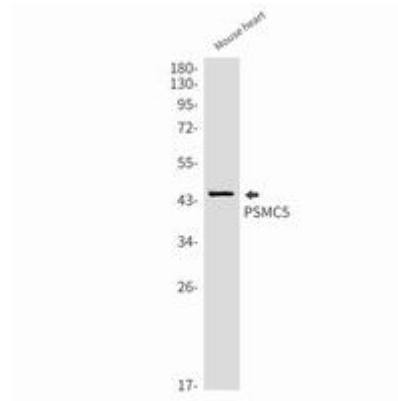
Constituents: PBS (without Mg²⁺ and Ca²⁺), pH 7.3 containing 50% glycerol, 0.5% BSA and 0.02% sodium azide

Research Areas: Cell Biology

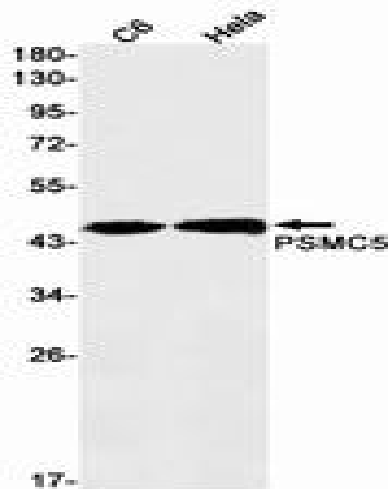
Storage & Shipping: Store at -20°C. Avoid repeated freezing and thawing



Immunocytochemistry analysis of PSMC5 (green) in HeLa using PSMC5 antibody, and DAPI (blue)



Western blot analysis of PSMC5 in mouse heart lysates using PSMC5 antibody.



Western blot analysis of PSMC5 in C6, HeLa lysates using PSMC5 antibody.