

PSMD14 RABBIT PAB

Cat.#: N226016

Product Name: Anti-PSMD14 Rabbit pAb

Synonyms: 26S proteasome non-ATPase regulatory subunit 14; PADI; POHI; Psm14; RPN11

UNIPROT ID: O00487

Background: Metalloprotease component of the 26S proteasome that specifically cleaves 'Lys-63'-linked polyubiquitin chains. The 26S proteasome is involved in the ATP-dependent degradation of ubiquitinated proteins. The function of the 'Lys-63'-specific deubiquitination of the proteasome is unclear.

Immunogen: A synthetic peptide of human PSMD14

Applications: WB,IHC-F,IHC-P,ICC/IF

Recommended Dilutions: WB: 1/500-1/1000 IHC: 1/50-1/100 IF: 1/50-1/200

Host Species: Rabbit

Clonality: Rabbit Polyclonal

Clone ID: -

MW: Calculated MW: 35 kDa; Observed MW: 35 kDa

Isotype: IgG

Purification: Affinity Purified

Species Reactivity: Human,Mouse,Rat,Monkey

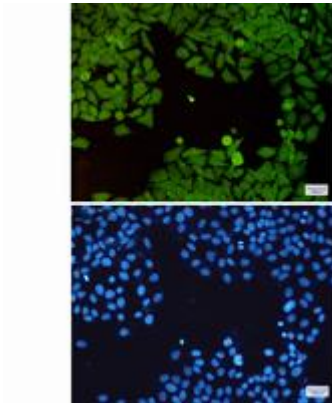
Conjugation: Unconjugated

Modification: Unmodified

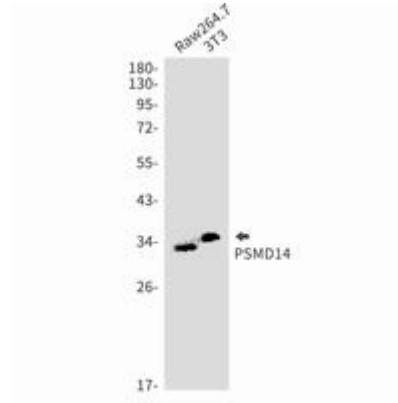
Constituents: PBS (without Mg²⁺ and Ca²⁺), pH 7.3 containing 50% glycerol, 0.5% BSA and 0.02% sodium azide

Research Areas: Cell Biology

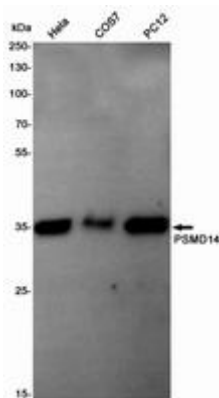
Storage & Shipping: Store at -20°C. Avoid repeated freezing and thawing



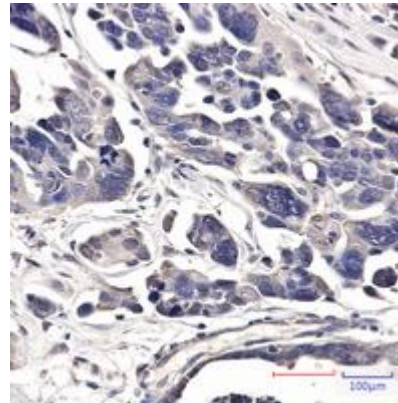
Immunocytochemistry analysis of PSMD14 (green) in Hela using PSMD14 antibody, and DAPI (blue)



Western blot analysis of PSMD14 in Raw264.7, 3T3 lysates using PSMD14 antibody.



Western blot analysis of PSMD14 in Hela, COS7, PC-12 lysates using PSMD14 antibody.



Immunohistochemistry analysis of paraffin-embedded Human Cholangiocarcinoma using PSMD14 antibody. High-pressure and temperature Sodium Citrate pH 6.0 was used for antigen retrieval.