

PSS2 RABBIT MAB

Cat.#: N262780

Product Name: Anti-PSS2 Rabbit Monoclonal Antibody

Synonyms: PSS2

UNIPROT ID: Q9BVG9

Background: Catalyzes a base-exchange reaction in which the polar head group of phosphatidylethanolamine (PE) or phosphatidylcholine (PC) is replaced by L-serine. PTDSS2 is specific for phosphatidylethanolamine and does not act on phosphatidylcholine.

Immunogen: Recombinant protein of human PTDSS2

Applications: WB,IP

Recommended Dilutions: WB: 1/500-1/1000 IP: 1/20

Host Species: Rabbit

Clonality: Rabbit Monoclonal

Clone ID: R07-9G9

MW: Calculated MW: 56 kDa; Observed MW: 56 kDa

Isotype: IgG

Purification: Affinity Purified

Species Reactivity: Human

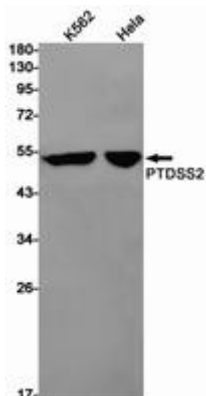
Conjugation: Unconjugated

Modification: Unmodified

Constituents: PBS (without Mg²⁺ and Ca²⁺), pH 7.3 containing 50% glycerol, 0.5% BSA and 0.02% sodium azide

Research Areas: Signal Transduction

Storage & Shipping: Store at -20°C. Avoid repeated freezing and thawing



Western blot analysis of PTDSS2 in K562, HeLa lysates using PSS2 antibody.



Product Description

Pioneering GTPase and Oncogene Product Development since 2010
