

PTBP1 RABBIT MAB

Cat.#: N263512

Product Name: Anti-PTBP1 Rabbit Monoclonal Antibody

Synonyms: PTB; PTB2; PTB3; PTB4; pPTB; HNRPI; PTB-1; PTB-T; HNRNPI; HNRNP-1

UNIPROT ID: P26599

Background: Plays a role in pre-mRNA splicing and in the regulation of alternative splicing events. Binds to the polypyrimidine tract of introns. May promote RNA looping when bound to two separate polypyrimidine tracts in the same pre-mRNA.

Immunogen: A synthetic peptide of human PTBP1

Applications: WB,IHC-P

Recommended Dilutions: WB: 1/500-1/1000 IHC: 1/50-1/100

Host Species: Rabbit

Clonality: Rabbit Monoclonal

Clone ID: R01-1G2

MW: Calculated MW: 57 kDa; Observed MW: 57 kDa

Isotype: IgG

Purification: Affinity Purified

Species Reactivity: Human,Mouse,Hamster

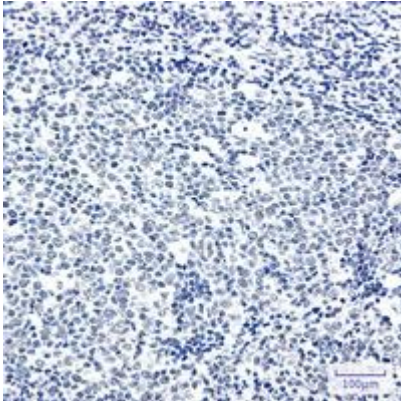
Conjugation: Unconjugated

Modification: Unmodified

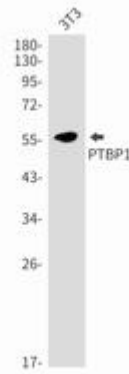
Constituents: PBS (without Mg²⁺ and Ca²⁺), pH 7.3 containing 50% glycerol, 0.5% BSA and 0.02% sodium azide

Research Areas: Epigenetics and Nuclear Signaling

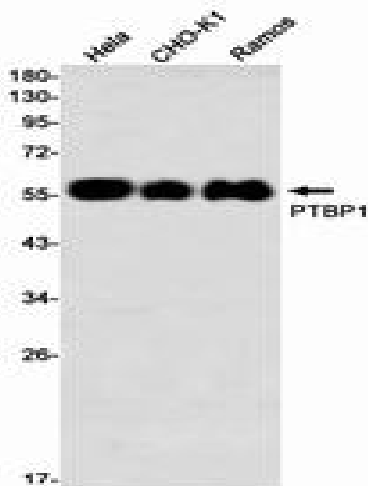
Storage & Shipping: Store at -20°C. Avoid repeated freezing and thawing



Immunohistochemistry analysis of paraffin-embedded Human tonsil using PTBP1 antibody. High-pressure and temperature Sodium Citrate pH 6.0 was used for antigen retrieval.



Western blot analysis of PTBP1 in Sodium 3T3 lysates using PTBP1 antibody.



Western blot analysis of PTBP1 in HeLa, CHO-K1, Ramos lysates using PTBP1 antibody.