

PTBP2 RABBIT PAB

Cat.#: S219495

Product Name: Anti-PTBP2 Rabbit Polyclonal Antibody

Synonyms: nPTB; PTBLP; brPTB

UNIPROT ID: Q9UKA9 (Gene Accession - BC016582)

Background: The protein encoded by this gene binds to intronic polypyrimidine clusters in pre-mRNA molecules and is implicated in controlling the assembly of other splicing-regulatory proteins. This protein is very similar to the polypyrimidine tract binding protein (PTB) but most of its isoforms are expressed primarily in the brain. Alternative splicing results in multiple transcript variants.

Immunogen: Fusion protein of human PTBP2

Applications: ELISA, WB, IHC

Recommended Dilutions: IHC: 100–300;WB: 1000–5000;ELISA: 5000–10000

Host Species: Rabbit

Clonality: Rabbit Polyclonal

Isotype: Immunogen-specific rabbit IgG

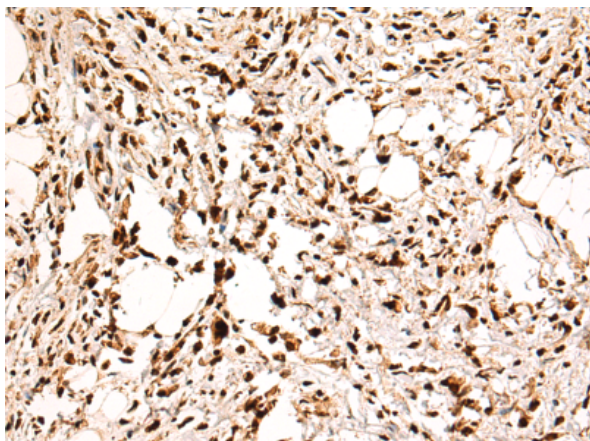
Purification: Antigen affinity purification

Species Reactivity: Human, Mouse, Rat

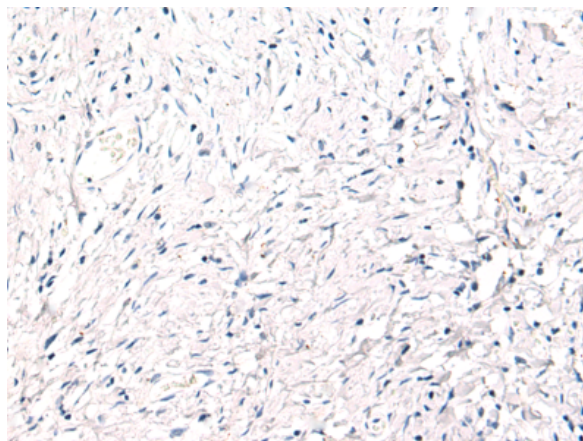
Constituents: PBS (without Mg²⁺ and Ca²⁺), pH 7.4, 150 mM NaCl, 0.05% Sodium Azide and 40% glycerol

Research Areas: Epigenetics and Nuclear Signaling, Neuroscience

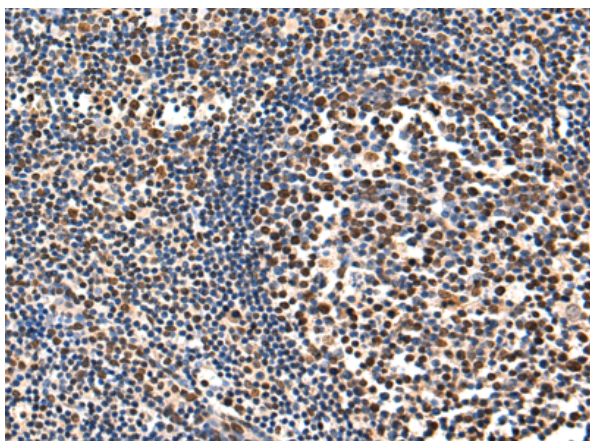
Storage & Shipping: Store at -20°C. Avoid repeated freezing and thawing



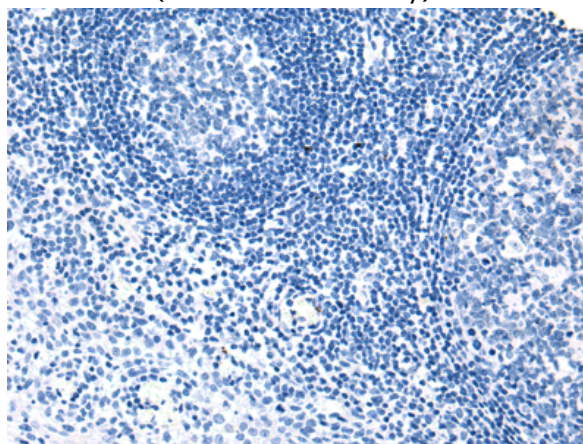
Immunohistochemistry analysis of paraffin embedded Human gastric cancer tissue using 219495(PTBP2 Antibody) at a dilution of 1/120(Nucleus).



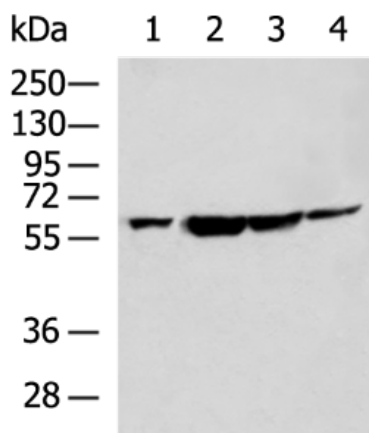
In comparison with the IHC on the left, the same paraffin-embedded Human gastric cancer tissue is first treated with the fusion protein and then with 219495(Anti-PTBP2 Antibody) at dilution 1/120.



The image on the left is immunohistochemistry of paraffin-embedded Human tonsil tissue using 219495(Anti-PTBP2 Antibody) at a dilution of 1/120.



In comparison with the IHC on the left, the same paraffin-embedded Human tonsil tissue is first treated with fusion protein and then with D227381(Anti-PTBP2 Antibody) at dilution 1/120.



Gel: 8%SDS-PAGE, Lysate: 40 µg;
 Lane 1-4: HepG2 cell, LOVO cell, Hela cell, Mouse testis tissue lysates;
 Primary antibody: 219495(PTBP2 Antibody) at dilution 1/800;
 Secondary antibody: HRP-conjugated Goat anti rabbit IgG at 1/5000 dilution;
 Exposure time: 3 seconds



Product Description

Pioneering GTPase and Oncogene Product Development since 2010
