

## PTBP3 RABBIT PAB

**Cat.#:** S219574

**Product Name:** Anti-PTBP3 Rabbit Polyclonal Antibody

**Synonyms:** ROD1

**UNIPROT ID:** O95758 (Gene Accession - BC044585 )

**Background:** The protein encoded by this gene binds RNA and is a regulator of cell differentiation. The encoded protein preferentially binds to poly(G) and poly(U) sequences in vitro. Several transcript variants encoding different isoforms have been found for this gene.

**Immunogen:** Fusion protein of human PTBP3

**Applications:** ELISA, WB, IHC

**Recommended Dilutions:** IHC: 50-100;WB: 1000-5000;ELISA: 5000-10000

**Host Species:** Rabbit

**Clonality:** Rabbit Polyclonal

**Isotype:** Immunogen-specific rabbit IgG

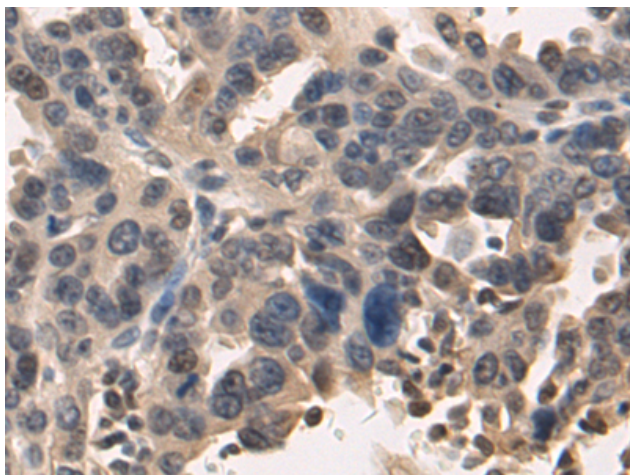
**Purification:** Antigen affinity purification

**Species Reactivity:** Human, Mouse, Rat

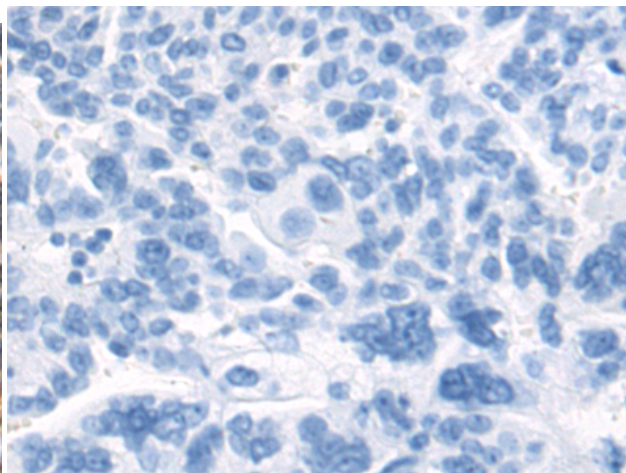
**Constituents:** PBS (without Mg<sup>2+</sup> and Ca<sup>2+</sup>), pH 7.4, 150 mM NaCl, 0.05% Sodium Azide and 40% glycerol

**Research Areas:** Epigenetics and Nuclear Signaling

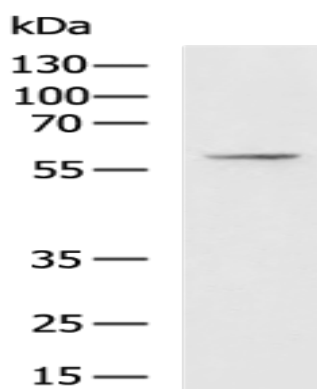
**Storage & Shipping:** Store at -20°C. Avoid repeated freezing and thawing



Immunohistochemistry analysis of paraffin embedded Human breast cancer tissue using 219574 (PTBP3 Antibody) at a dilution of 1/70 (Nucleus).



In comparison with the IHC on the left, the same paraffin-embedded Human breast cancer tissue is first treated with the fusion protein and then with 219574 (Anti-PTBP3 Antibody) at dilution 1/70.



Gel: 8% SDS-PAGE, Lysate: 40  $\mu$ g;  
Lane: A549 cell lysate;  
Primary antibody: 219574 (PTBP3 Antibody) at dilution 1/1000;  
Secondary antibody: HRP-conjugated Goat anti rabbit IgG at 1/5000 dilution;  
Exposure time: 10 seconds