

PTCD3 RABBIT PAB

Cat.#: S219500

Product Name: Anti-PTCD3 Rabbit Polyclonal Antibody

Synonyms: MRP-S39

UNIPROT ID: Q96EY7 (Gene Accession - BC011832)

Background: Mitochondrial RNA-binding protein that has a role in mitochondrial translation.

Immunogen: Fusion protein of human PTCD3

Applications: ELISA, WB, IHC

Recommended Dilutions: IHC: 100-200;WB: 500-2000;ELISA: 5000-10000

Host Species: Rabbit

Clonality: Rabbit Polyclonal

Isotype: Immunogen-specific rabbit IgG

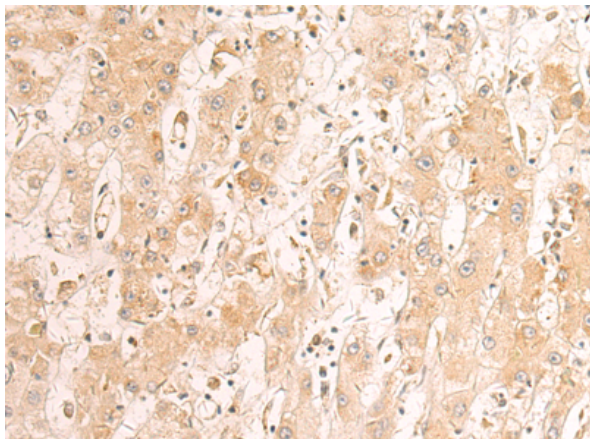
Purification: Antigen affinity purification

Species Reactivity: Human

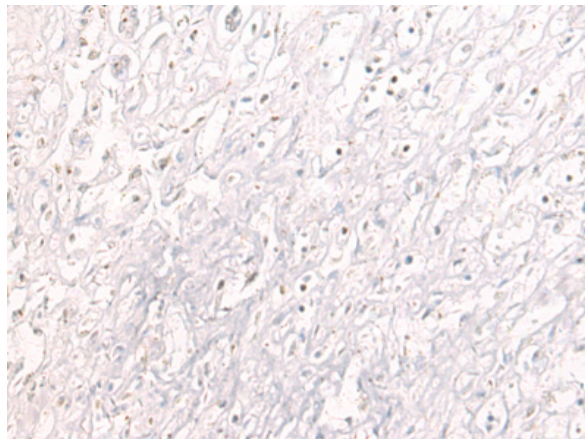
Constituents: PBS (without Mg²⁺ and Ca²⁺), pH 7.4, 150 mM NaCl, 0.05% Sodium Azide and 40% glycerol

Research Areas: Epigenetics and Nuclear Signaling

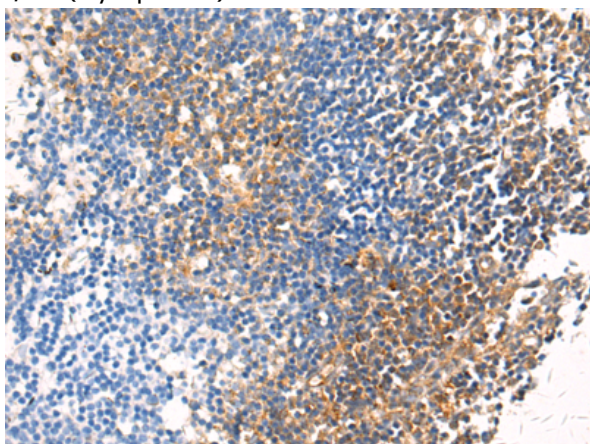
Storage & Shipping: Store at -20°C. Avoid repeated freezing and thawing



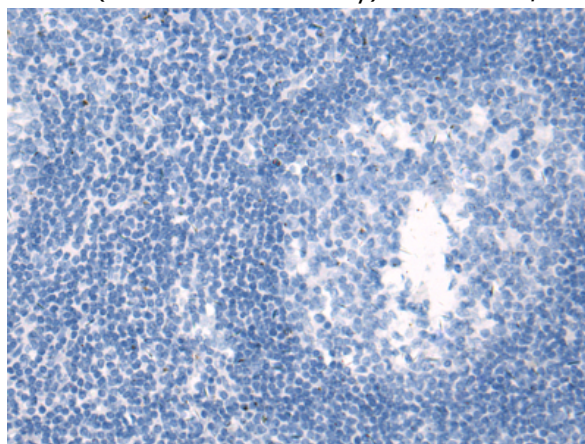
Immunohistochemistry analysis of paraffin embedded Human liver cancer tissue using 219500(PTCD3 Antibody) at a dilution of 1/100(Cytoplasm).



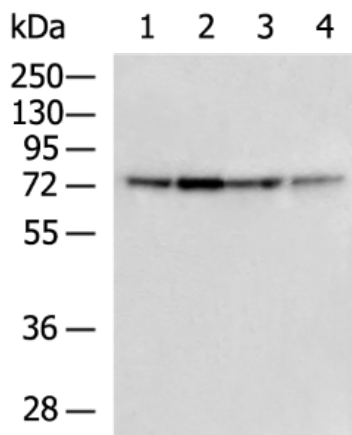
In comparison with the IHC on the left, the same paraffin-embedded Human liver cancer tissue is first treated with the fusion protein and then with 219500(Anti-PTCD3 Antibody) at dilution 1/100.



The image on the left is immunohistochemistry of paraffin-embedded Human tonsil tissue using 219500(Anti-PTCD3 Antibody) at a dilution of 1/100.



In comparison with the IHC on the left, the same paraffin-embedded Human tonsil tissue is first treated with fusion protein and then with D227392(Anti-PTCD3 Antibody) at dilution 1/100.



Gel: 8%SDS-PAGE, Lysate: 40 µg;
 Lane 1-4: HepG2 cell, BGC-823 Cell, LOVO cell, A172 cell lysates;
 Primary antibody: 219500(PTCD3 Antibody) at dilution 1/800;
 Secondary antibody: HRP-conjugated Goat anti rabbit IgG at 1/5000 dilution;
 Exposure time: 15 seconds



Product Description

Pioneering GTPase and Oncogene Product Development since 2010
