

PTCH1 RABBIT PAB**Cat.#:** N225484**Product Name:** Anti-PTCH1 Rabbit pAb**Synonyms:** PTCH1; PTCH; Protein patched homolog 1; PTC; PTC1**UNIPROT ID:** Q13635

Background: This gene encodes a member of the patched gene family. The encoded protein is the receptor for sonic hedgehog, a secreted molecule implicated in the formation of embryonic structures and in tumorigenesis, as well as the desert hedgehog and indian hedgehog proteins. This gene functions as a tumor suppressor. Mutations of this gene have been associated with basal cell nevus syndrome, esophageal squamous cell carcinoma, trichoepitheliomas, transitional cell carcinomas of the bladder, as well as holoprosencephaly. Alternative splicing results in multiple transcript variants encoding different isoforms. Additional splice variants have been described, but their full length sequences and biological validity cannot be determined currently.

Immunogen: The antiserum was produced against synthesized peptide derived from human Patched. AA range:1-50

Applications: WB,IHC-P,ELISA

Recommended Dilutions: WB: 1/500-1/1000 IHC: 1/50-1/100 ELISA: 1/10000

Host Species: Rabbit

Clonality: Rabbit Polyclonal

Clone ID: -

MW: Calculated MW: 161 kDa; Observed MW: 161 kDa

Isotype: IgG

Purification: Affinity Chromatography

Species Reactivity: Human,Mouse

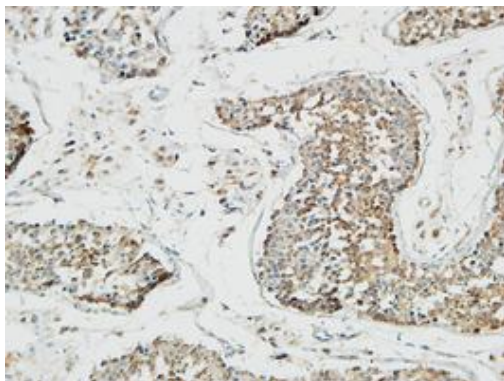
Conjugation: Unconjugated

Modification: Unmodified

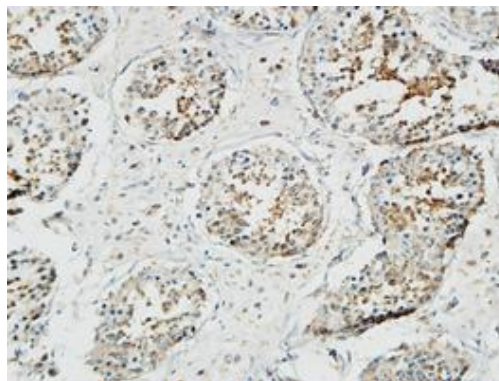
Constituents: PBS (without Mg²⁺ and Ca²⁺), pH 7.3 containing 50% glycerol, 0.5% BSA and 0.02% sodium azide

Research Areas: Cell Biology

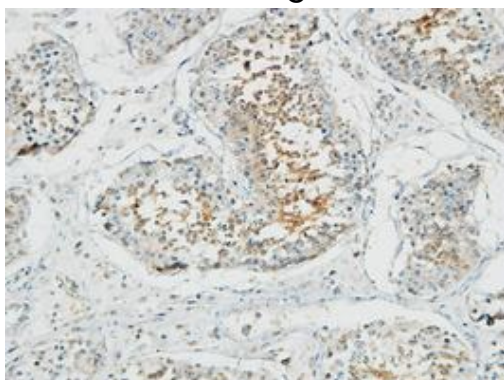
Storage & Shipping: Store at -20°C. Avoid repeated freezing and thawing



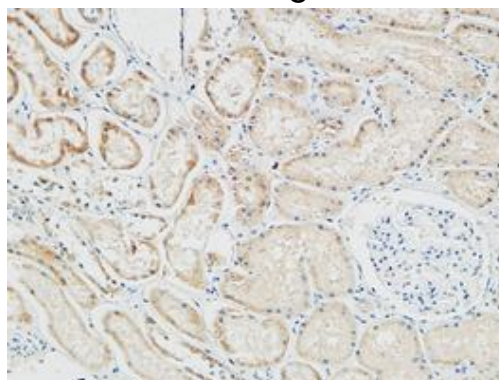
Immunohistochemical analysis of paraffin-embedded Human tonsils using PTCH1 antibody. High-pressure and temperature Tris-EDTA pH 8.0 was used for antigen retrieval.



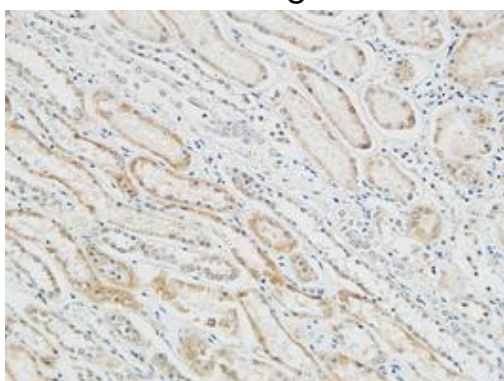
Immunohistochemistry analysis of paraffin-embedded Human testis using PTCH1 antibody. High-pressure and temperature Tris-EDTA pH 8.0 was used for antigen retrieval.



Immunohistochemistry analysis of paraffin-embedded Human testis using PTCH1 antibody. High-pressure and temperature Tris-EDTA pH 8.0 was used for antigen retrieval.



Immunohistochemistry analysis of paraffin-embedded Human Right kidney using PTCH1 antibody. High-pressure and temperature Tris-EDTA pH 8.0 was used for antigen retrieval.



Immunohistochemistry analysis of paraffin-embedded Human Right kidney using PTCH1 antibody. High-pressure and temperature Tris-EDTA pH 8.0 was used for antigen retrieval.

