

## PTF1A RABBIT MAB

**Cat.#:** N261612

**Product Name:** Anti-PTF1A Rabbit Monoclonal Antibody

**Synonyms:** Pancreas-specific transcription factor 1a; bHLH transcription factor p48; PTF1-p48

**UNIPROT ID:** Q9QX98

**Background:** Transcription factor implicated in the cell fate determination in various organs. Binds to the E-box consensus sequence 5'-CANNTG-3'. Plays a role in early and late pancreas development and differentiation. Important for determining whether cells allocated to the pancreatic buds continue towards pancreatic organogenesis or revert back to duodenal fates.

**Immunogen:** Recombinant protein of mouse PTF1A

**Applications:** WB,IP

**Recommended Dilutions:** WB: 1/500-1/1000 IP: 1/20

**Host Species:** Rabbit

**Clonality:** Rabbit Monoclonal

**Clone ID:** R04-7B1

**MW:** Calculated MW: 35 kDa; Observed MW: 48 kDa

**Isotype:** IgG

**Purification:** Affinity Purified

**Species Reactivity:** Human,Rat

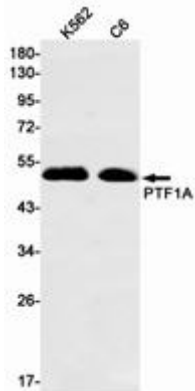
**Conjugation:** Unconjugated

**Modification:** Unmodified

**Constituents:** PBS (without Mg<sup>2+</sup> and Ca<sup>2+</sup>), pH 7.3 containing 50% glycerol, 0.5% BSA and 0.02% sodium azide

**Research Areas:** Neuroscience

**Storage & Shipping:** Store at -20°C. Avoid repeated freezing and thawing



Western blot analysis of PTF1A in K562, C6 lysates using PTF1A antibody.