

PTGDS RABBIT PAB

Cat.#: S216756

Product Name: Anti-PTGDS Rabbit Polyclonal Antibody

Synonyms: PDS; PGD2; PGDS; LPGDS; PGDS2; L-PGDS

UNIPROT ID: P41222 (Gene Accession - BC005939)

Background: The protein encoded by this gene is a glutathione-independent prostaglandin D synthase that catalyzes the conversion of prostaglandin H₂ (PGH₂) to prostaglandin D₂ (PGD₂). PGD₂ functions as a neuromodulator as well as a trophic factor in the central nervous system. PGD₂ is also involved in smooth muscle contraction/relaxation and is a potent inhibitor of platelet aggregation. This gene is preferentially expressed in brain. Studies with transgenic mice overexpressing this gene suggest that this gene may be also involved in the regulation of non-rapid eye movement sleep.

Immunogen: Fusion protein of human PTGDS

Applications: ELISA, WB, IHC

Recommended Dilutions: IHC: 100–300;WB: 1000–5000;ELISA: 5000–10000

Host Species: Rabbit

Clonality: Rabbit Polyclonal

Isotype: Immunogen-specific rabbit IgG

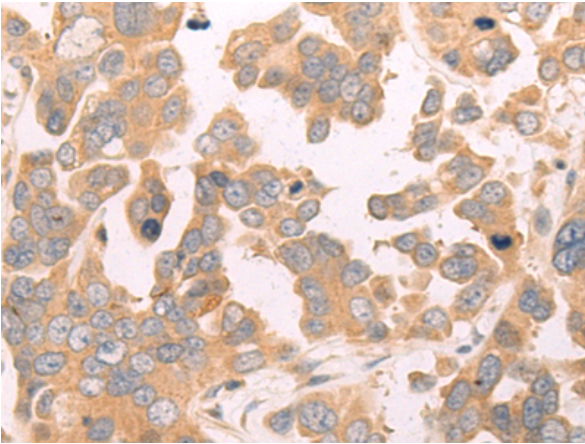
Purification: Antigen affinity purification

Species Reactivity: Human, Mouse

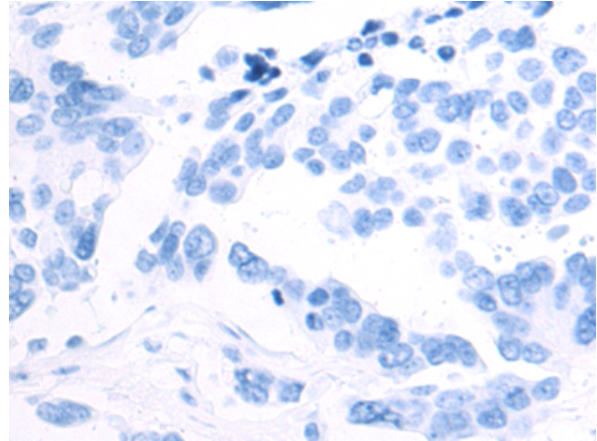
Constituents: PBS (without Mg²⁺ and Ca²⁺), pH 7.4, 150 mM NaCl, 0.05% Sodium Azide and 40% glycerol

Research Areas: Signal Transduction

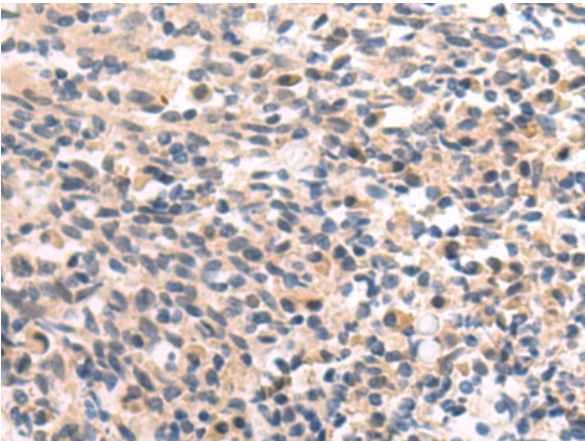
Storage & Shipping: Store at -20°C. Avoid repeated freezing and thawing



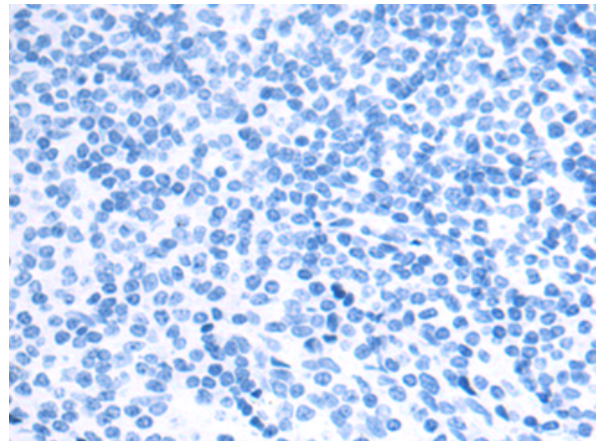
Immunohistochemistry analysis of paraffin embedded Human colorectal cancer tissue using 216756(PTGDS Antibody) at a dilution of 1/120(Cytoplasm).



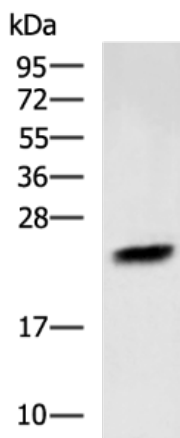
In comparison with the IHC on the left, the same paraffin-embedded Human colorectal cancer tissue is first treated with the fusion protein and then with 216756(Anti-PTGDS Antibody) at dilution 1/120.



The image on the left is immunohistochemistry of paraffin-embedded Human tonsil tissue using 216756(Anti-PTGDS Antibody) at a dilution of 1/120.



In comparison with the IHC on the left, the same paraffin-embedded Human tonsil tissue is first treated with fusion protein and then with D221182(Anti-PTGDS Antibody) at dilution 1/120.



Gel: 12%SDS-PAGE, Lysate: 40 µg;
Lane: Mouse eye tissue lysate;
Primary antibody: 216756(PTGDS Antibody) at dilution 1/1300;
Secondary antibody: HRP-conjugated Goat anti rabbit IgG at 1/5000 dilution;
Exposure time: 1 minute



Product Description

Pioneering GTPase and Oncogene Product Development since 2010
