

PTGER3 RABBIT PAB

Cat.#: S221232

Product Name: Anti-PTGER3 Rabbit Polyclonal Antibody

Synonyms: EP3; EP3e; EP3-I; EP3-II; EP3-IV; PGE2-R; EP3-III

UNIPROT ID: P43115 (Gene Accession - NP_942007)

Background: The protein encoded by this gene is a member of the G-protein coupled receptor family. This protein is one of four receptors identified for prostaglandin E2 (PGE2). This receptor may have many biological functions, which involve digestion, nervous system, kidney reabsorption, and uterine contraction activities. Studies of the mouse counterpart suggest that this receptor may also mediate adrenocorticotrophic hormone response as well as fever generation in response to exogenous and endogenous stimuli. Multiple transcript variants encoding different isoforms have been found for this gene.

Immunogen: Synthetic peptide of human PTGER3

Applications: ELISA, IHC

Recommended Dilutions: IHC: 25-100; ELISA: 2000-5000

Host Species: Rabbit

Clonality: Rabbit Polyclonal

Isotype: Immunogen-specific rabbit IgG

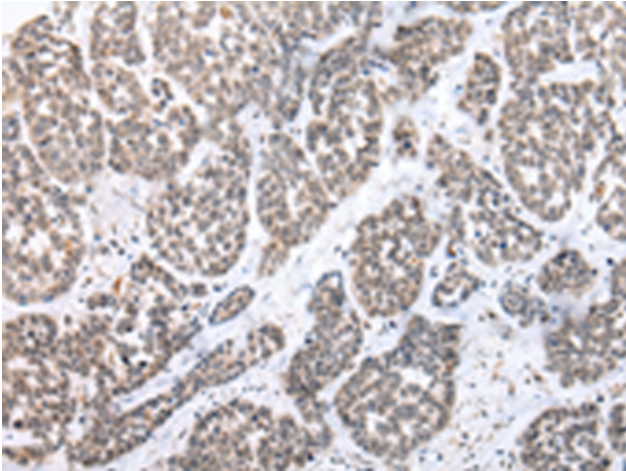
Purification: Antigen affinity purification

Species Reactivity: Human

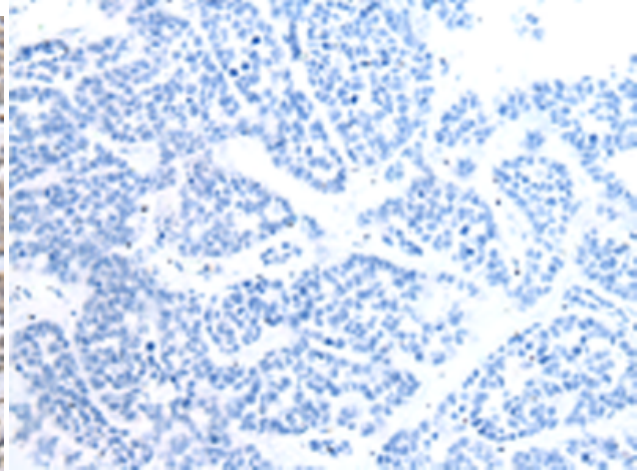
Constituents: PBS (without Mg²⁺ and Ca²⁺), pH 7.4, 150 mM NaCl, 0.05% Sodium Azide and 40% glycerol

Research Areas: Signal Transduction, Metabolism

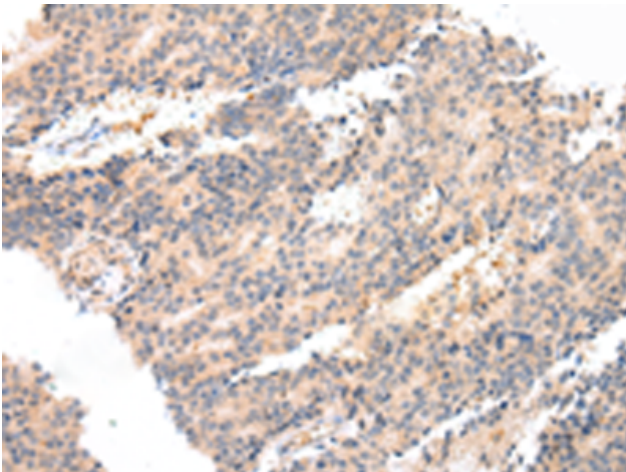
Storage & Shipping: Store at -20°C. Avoid repeated freezing and thawing



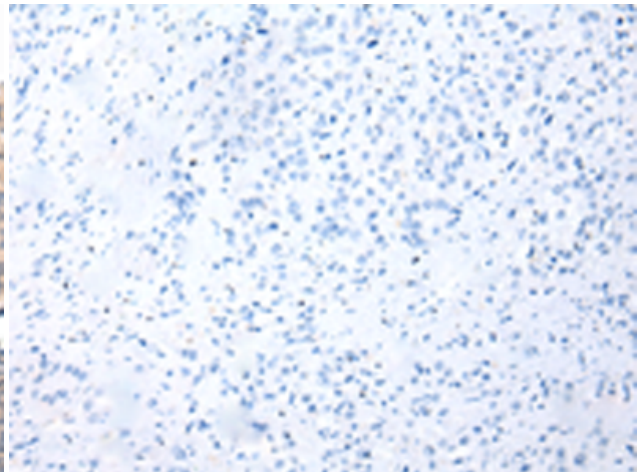
Immunohistochemistry analysis of paraffin embedded Human esophagus cancer tissue using 221232(PTGER3 Antibody) at a dilution of 1/20(Nucleus or Cytoplasm).



In comparison with the IHC on the left, the same paraffin-embedded Human esophagus cancer tissue is first treated with the synthetic peptide and then with 221232(Anti-PTGER3 Antibody) at dilution 1/20.



The image on the left is immunohistochemistry of paraffin-embedded Human prostate cancer tissue using 221232(Anti-PTGER3 Antibody) at a dilution of 1/20.



In comparison with the IHC on the left, the same paraffin-embedded Human prostate cancer tissue is first treated with synthetic peptide and then with D262741(Anti-PTGER3 Antibody) at dilution 1/20.