

## PTGES2 RABBIT PAB

**Cat.#:** S216757

**Product Name:** Anti-PTGES2 Rabbit Polyclonal Antibody

**Synonyms:** GBF1; GBF-1; PGES2; C9orf15; mPGES-2

**UNIPROT ID:** Q9H7Z7 (Gene Accession - BC011613 )

**Background:** The protein encoded by this gene is a membrane-associated prostaglandin E synthase, which catalyzes the conversion of prostaglandin H2 to prostaglandin E2. This protein also has been shown to activate the transcription regulated by a gamma-interferon-activated transcription element (GATE). Multiple transcript variants have been found for this gene.

**Immunogen:** Fusion protein of human PTGES2

**Applications:** ELISA, WB, IHC

**Recommended Dilutions:** IHC: 50-100;WB: 200-1000;ELISA: 5000-10000

**Host Species:** Rabbit

**Clonality:** Rabbit Polyclonal

**Isotype:** Immunogen-specific rabbit IgG

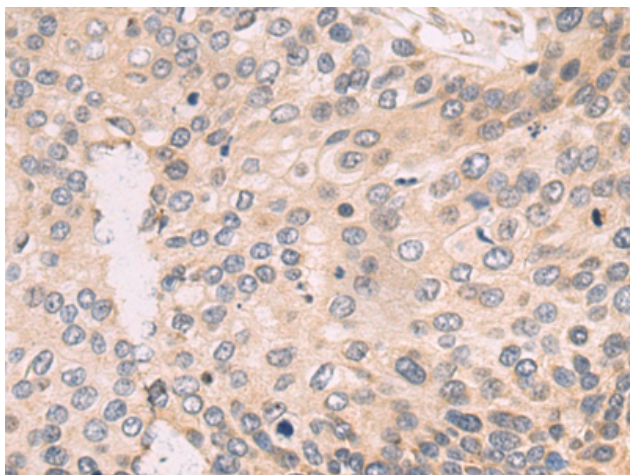
**Purification:** Antigen affinity purification

**Species Reactivity:** Human, Mouse

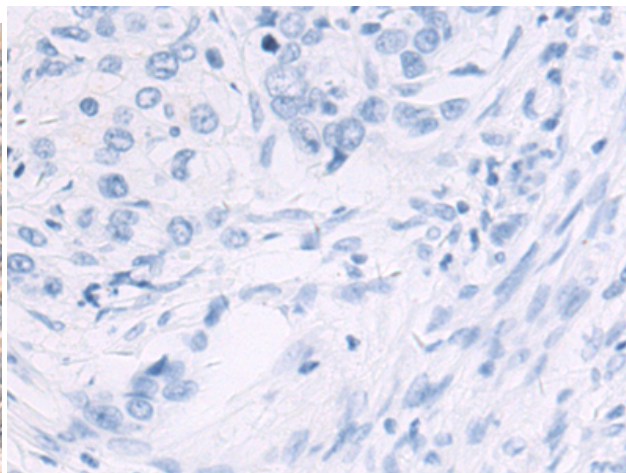
**Constituents:** PBS (without Mg<sup>2+</sup> and Ca<sup>2+</sup>), pH 7.4, 150 mM NaCl, 0.05% Sodium Azide and 40% glycerol

**Research Areas:** Signal Transduction

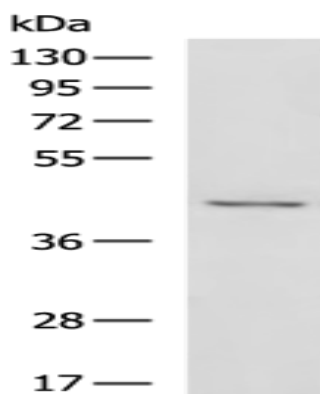
**Storage & Shipping:** Store at -20°C. Avoid repeated freezing and thawing



Immunohistochemistry analysis of paraffin embedded Human cervical cancer tissue using 216757(PTGES2 Antibody) at a dilution of 1/55(Cytoplasm).



In comparison with the IHC on the left, the same paraffin-embedded Human cervical cancer tissue is first treated with the fusion protein and then with 216757(Anti-PTGES2 Antibody) at dilution 1/55.



Gel: 8%SDS-PAGE, Lysate: 40  $\mu$ g;  
Lane: MCF7 cell lysate;  
Primary antibody: 216757(PTGES2 Antibody) at dilution 1/400;  
Secondary antibody: HRP-conjugated Goat anti rabbit IgG at 1/5000 dilution;  
Exposure time: 90 seconds