

PTK2 RABBIT PAB

Cat.#: S213509

Product Name: Anti-PTK2 Rabbit Polyclonal Antibody

Synonyms: FAK, FADK, FAK1, FRNK, PPP1R71, p125FAK, pp125FAK

UNIPROT ID: Q05397 (Gene Accession - NP_722560)

Background: This gene encodes a cytoplasmic protein tyrosine kinase which is found concentrated in the focal adhesions that form between cells growing in the presence of extracellular matrix constituents. The encoded protein is a member of the FAK subfamily of protein tyrosine kinases but lacks significant sequence similarity to kinases from other subfamilies. Activation of this gene may be an important early step in cell growth and intracellular signal transduction pathways triggered in response to certain neural peptides or to cell interactions with the extracellular matrix. Several transcript variants encoding different isoforms have been found for this gene, but the full-length natures of only three of them have been determined.

Immunogen: Synthetic peptide of human PTK2

Applications: ELISA, WB, IHC

Recommended Dilutions: IHC: 100-300;WB: 2000-5000;ELISA: 1000-5000

Host Species: Rabbit

Clonality: Rabbit Polyclonal

Isotype: Immunogen-specific rabbit IgG

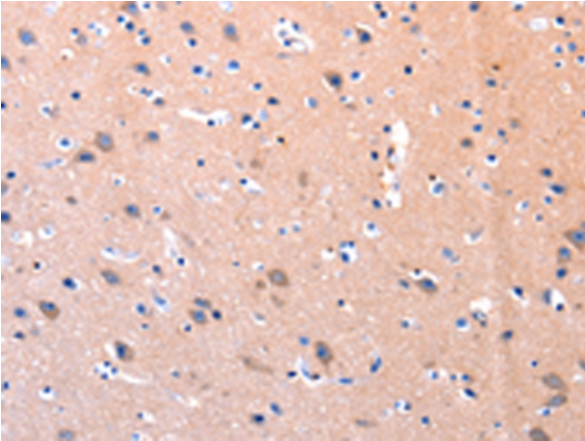
Purification: Antigen affinity purification

Species Reactivity: Human, Mouse, Rat

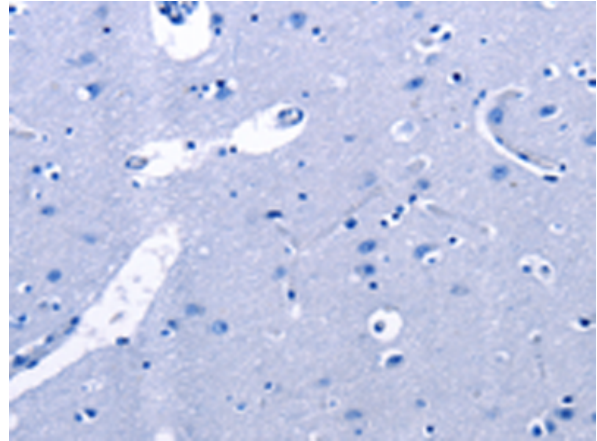
Constituents: PBS (without Mg²⁺ and Ca²⁺), pH 7.4, 150 mM NaCl, 0.05% Sodium Azide and 40% glycerol

Research Areas: Signal Transduction, Cardiovascular

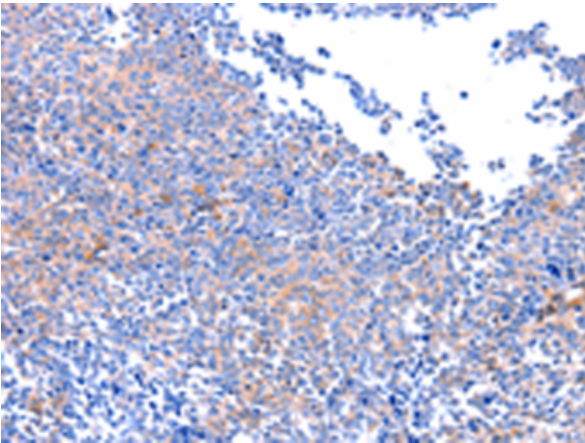
Storage & Shipping: Store at -20°C. Avoid repeated freezing and thawing



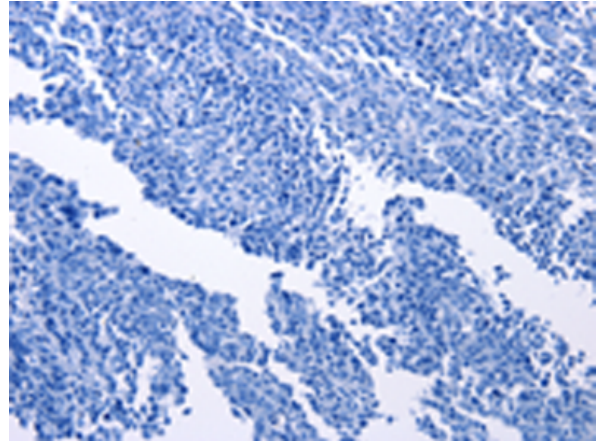
Immunohistochemistry analysis of paraffin embedded Human brain tissue using 213509(PTK2 Antibody) at a dilution of 1/75(Cytoplasm).



In comparison with the IHC on the left, the same paraffin-embedded Human brain tissue is first treated with the synthetic peptide and then with 213509(Anti-PTK2 Antibody) at dilution 1/75.



The image on the left is immunohistochemistry of paraffin-embedded Human ovarian cancer tissue using 213509(Anti-PTK2 Antibody) at a dilution of 1/75.



In comparison with the IHC on the left, the same paraffin-embedded Human ovarian cancer tissue is first treated with synthetic peptide and then with D160324(Anti-PTK2 Antibody) at dilution 1/75.



Gel: 8%SDS-PAGE, Lysate: 40 µg;
Lane: Mouse brain tissue;
Primary antibody: 213509(PTK2 Antibody) at dilution 1/1850;
Secondary antibody: Goat anti rabbit IgG at 1/8000 dilution;
Exposure time: 1 minute



Product Description

Pioneering GTPase and Oncogene Product Development since 2010
