

PTMA RABBIT PAB

Cat.#: S217899

Product Name: Anti-PTMA Rabbit Polyclonal Antibody

Synonyms: TMSA

UNIPROT ID: P06454 (Gene Accession - BC003510)

Background: Prothymosin alpha may mediate immune function by conferring resistance to certain opportunistic infections.

Immunogen: Fusion protein of human PTMA

Applications: ELISA, IHC

Recommended Dilutions: IHC: 150-300; ELISA: 5000-10000

Host Species: Rabbit

Clonality: Rabbit Polyclonal

Isotype: Immunogen-specific rabbit IgG

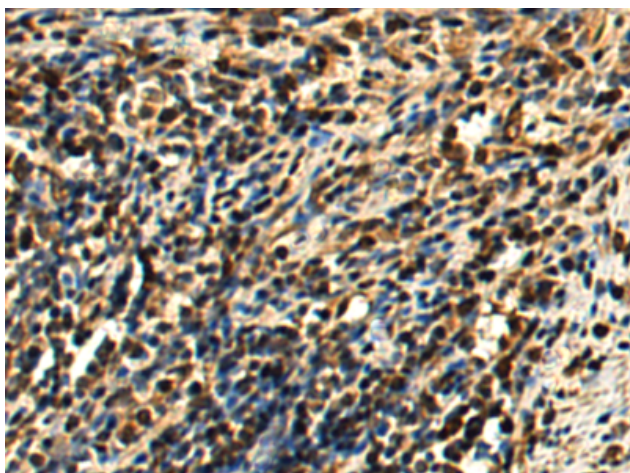
Purification: Antigen affinity purification

Species Reactivity: Human, Mouse, Rat

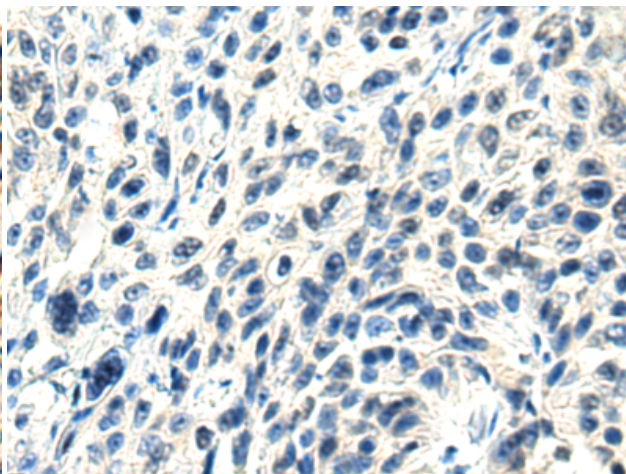
Constituents: PBS (without Mg²⁺ and Ca²⁺), pH 7.4, 150 mM NaCl, 0.05% Sodium Azide and 40% glycerol

Research Areas: Immunology

Storage & Shipping: Store at -20°C. Avoid repeated freezing and thawing



Immunohistochemistry analysis of paraffin embedded Human esophagus cancer tissue using 217899(PTMA Antibody) at a dilution of 1/160(Nucleus).



In comparison with the IHC on the left, the same paraffin-embedded Human esophagus cancer tissue is first treated with the fusion protein and then with 217899(Anti-PTMA Antibody) at dilution 1/160.