

## PTPN6 RABBIT PAB

**Cat.#:** S210583

**Product Name:** Anti-PTPN6 Rabbit Polyclonal Antibody

**Synonyms:** HCP; HCPH; SHP1; SHP-1; HPTPIC; PTP-1C; SHP-1L; SH-PTP1

**UNIPROT ID:** P29350 (Gene Accession - BC002523 )

**Background:** The protein encoded by this gene is a member of the protein tyrosine phosphatase (PTP) family. PTPs are known to be signaling molecules that regulate a variety of cellular processes including cell growth, differentiation, mitotic cycle, and oncogenic transformation. N-terminal part of this PTP contains two tandem Src homolog (SH2) domains, which act as protein phospho-tyrosine binding domains, and mediate the interaction of this PTP with its substrates. This PTP is expressed primarily in hematopoietic cells, and functions as an important regulator of multiple signaling pathways in hematopoietic cells. This PTP has been shown to interact with, and dephosphorylate a wide spectrum of phospho-proteins involved in hematopoietic cell signaling. Multiple alternatively spliced variants of this gene, which encode distinct isoforms, have been reported.

**Immunogen:** Fusion protein of human PTPN6

**Applications:** ELISA, WB, IHC

**Recommended Dilutions:** IHC: 50-200;WB: 200-1000;ELISA: 1000-2000

**Host Species:** Rabbit

**Clonality:** Rabbit Polyclonal

**Isotype:** Immunogen-specific rabbit IgG

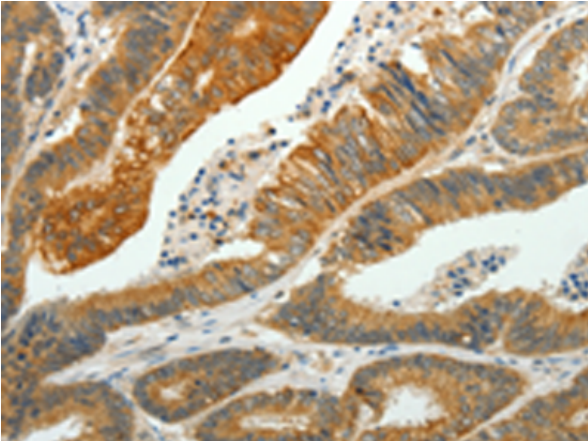
**Purification:** Antigen affinity purification

**Species Reactivity:** Human, Mouse, Rat

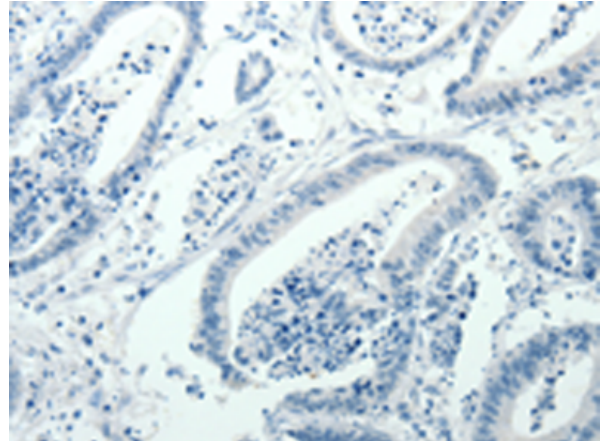
**Constituents:** PBS (without Mg<sup>2+</sup> and Ca<sup>2+</sup>), pH 7.4, 150 mM NaCl, 0.05% Sodium Azide and 40% glycerol

**Research Areas:** Signal Transduction, Cancer, Developmental Biology

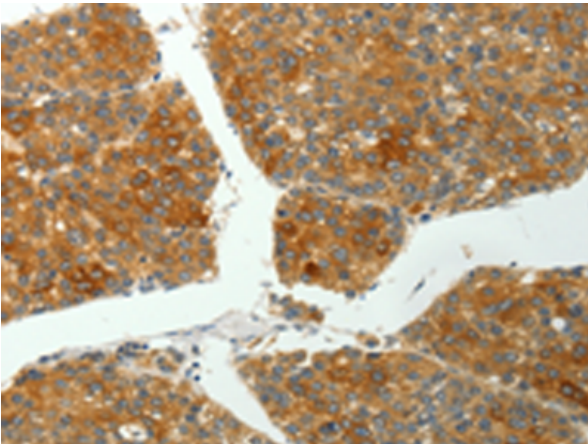
**Storage & Shipping:** Store at -20°C. Avoid repeated freezing and thawing



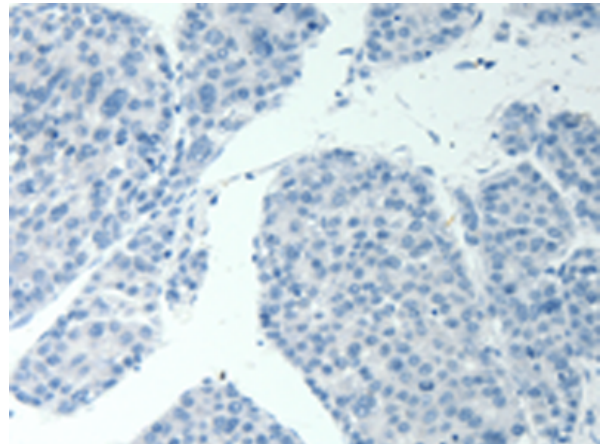
Immunohistochemistry analysis of paraffin embedded Human colon cancer tissue using 210583(PTPN6 Antibody) at a dilution of 1/35(Cytoplasm).



In comparison with the IHC on the left, the same paraffin-embedded Human colon cancer tissue is first treated with the fusion protein and then with 210583(Anti-PTPN6 Antibody) at dilution 1/35.



The image on the left is immunohistochemistry of paraffin-embedded Human liver cancer tissue using 210583(Anti-PTPN6 Antibody) at a dilution of 1/35.



In comparison with the IHC on the left, the same paraffin-embedded Human liver cancer tissue is first treated with fusion protein and then with D121215(Anti-PTPN6 Antibody) at dilution 1/35.



Gel: 10%SDS-PAGE, Lysate: 40 µg;  
 Lane 1-2: A375 cells, A431 cells;  
 Primary antibody: 210583(PTPN6 Antibody) at dilution 1/500;  
 Secondary antibody: Goat anti rabbit IgG at 1/8000 dilution;  
 Exposure time: 90 seconds



# Product Description

Pioneering GTPase and Oncogene Product Development since 2010

---