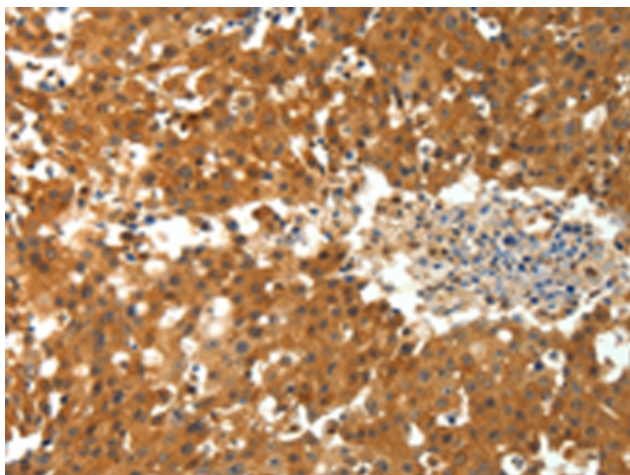


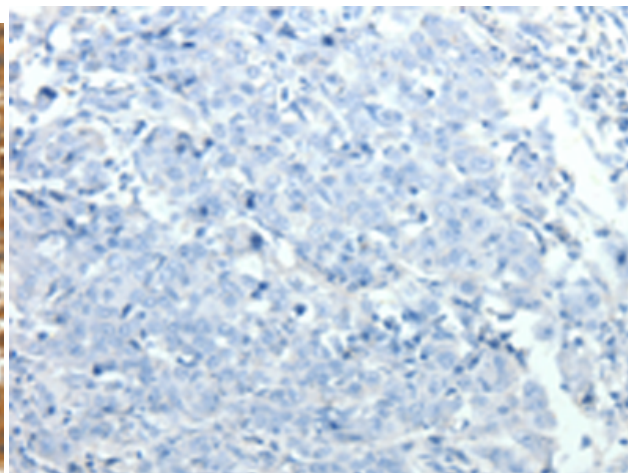
**PTPRE RABBIT PAB****Cat.#:** S216759**Product Name:** Anti-PTPRE Rabbit Polyclonal Antibody**Synonyms:** PTPE, HPTPE, R-PTP-EPSILON**UNIPROT ID:** P23469 (Gene Accession - BC050062 )

**Background:** The protein encoded by this gene is a member of the protein tyrosine phosphatase (PTP) family. PTPs are known to be signaling molecules that regulate a variety of cellular processes including cell growth, differentiation, mitotic cycle, and oncogenic transformation. Two alternatively spliced transcript variants of this gene have been reported, one of which encodes a receptor-type PTP that possesses a short extracellular domain, a single transmembrane region, and two tandem intracytoplasmic catalytic domains; Another one encodes a PTP that contains a distinct hydrophilic N-terminus, and thus represents a nonreceptor-type isoform of this PTP. Studies of the similar gene in mice suggested the regulatory roles of this PTP in RAS related signal transduction pathways, cytokines induced SATA signaling, as well as the activation of voltage-gated K<sup>+</sup> channels.

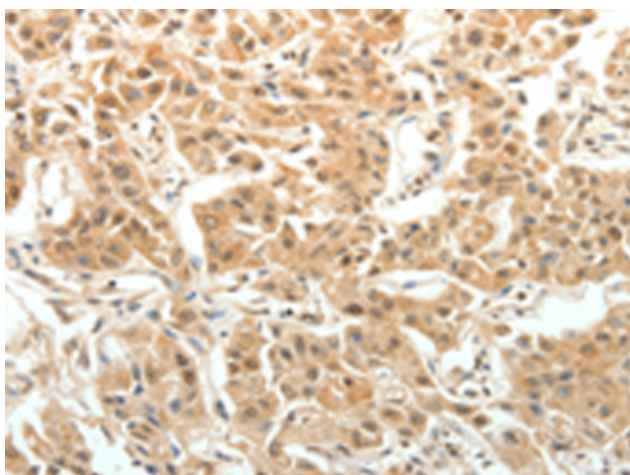
**Immunogen:** Fusion protein of human PTPRE**Applications:** ELISA, IHC**Recommended Dilutions:** IHC: 15-50; ELISA: 1000-5000**Host Species:** Rabbit**Clonality:** Rabbit Polyclonal**Isotype:** Immunogen-specific rabbit IgG**Purification:** Antigen affinity purification**Species Reactivity:** Human, Mouse, Rat**Constituents:** PBS (without Mg<sup>2+</sup> and Ca<sup>2+</sup>), pH 7.4, 150 mM NaCl, 0.05% Sodium Azide and 40% glycerol**Research Areas:** Signal Transduction**Storage & Shipping:** Store at -20°C. Avoid repeated freezing and thawing



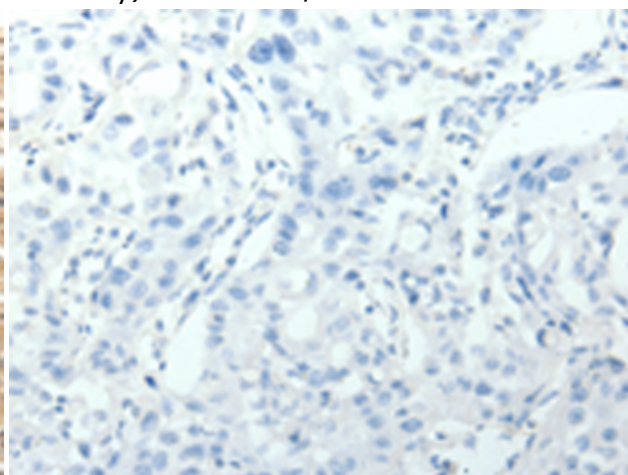
Immunohistochemistry analysis of paraffin embedded Human breast cancer tissue using 216759(PTPRE Antibody) at a dilution of 1/10(Cytoplasm).



In comparison with the IHC on the left, the same paraffin-embedded Human breast cancer tissue is first treated with the fusion protein and then with 216759(Anti-PTPRE Antibody) at dilution 1/10.



The image on the left is immunohistochemistry of paraffin-embedded Human lung cancer tissue using 216759(Anti-PTPRE Antibody) at a dilution of 1/10.



In comparison with the IHC on the left, the same paraffin-embedded Human lung cancer tissue is first treated with fusion protein and then with D221185(Anti-PTPRE Antibody) at dilution 1/10.