

PTPRM RABBIT PAB

Cat.#: S220184

Product Name: Anti-PTPRM Rabbit Polyclonal Antibody

Synonyms: RPTPM, RPTPU, PTPRL1, hR-PTPu, R-PTP-MU

UNIPROT ID: P28827 (Gene Accession - NP_002836)

Background: The protein encoded by this gene is a member of the protein tyrosine phosphatase (PTP) family. PTPs are known to be signaling molecules that regulate a variety of cellular processes including cell growth, differentiation, mitotic cycle, and oncogenic transformation. This PTP possesses an extracellular region, a single transmembrane region, and two tandem catalytic domains, and thus represents a receptor-type PTP. The extracellular region contains a meprin-A5 antigen-PTP mu (MAM) domain, an Ig-like domain and four fibronectin type III-like repeats. This PTP has been shown to mediate cell-cell aggregation through the interaction with another molecule of this PTP on an adjacent cell. This PTP can interact with scaffolding protein RACK1/GNB2L1, which may be necessary for the downstream signaling in response to cell-cell adhesion. Alternative splicing results in multiple transcripts encoding distinct isoforms.

Immunogen: Synthetic peptide of human PTPRM

Applications: ELISA, IHC

Recommended Dilutions: IHC: 100-300; ELISA: 2000-10000

Host Species: Rabbit

Clonality: Rabbit Polyclonal

Isotype: Immunogen-specific rabbit IgG

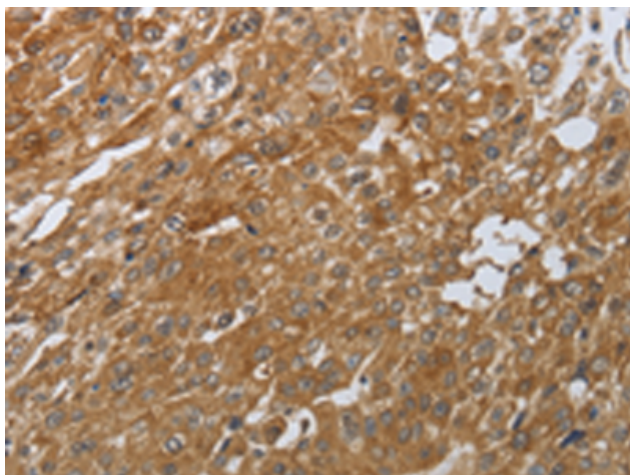
Purification: Antigen affinity purification

Species Reactivity: Human, Mouse

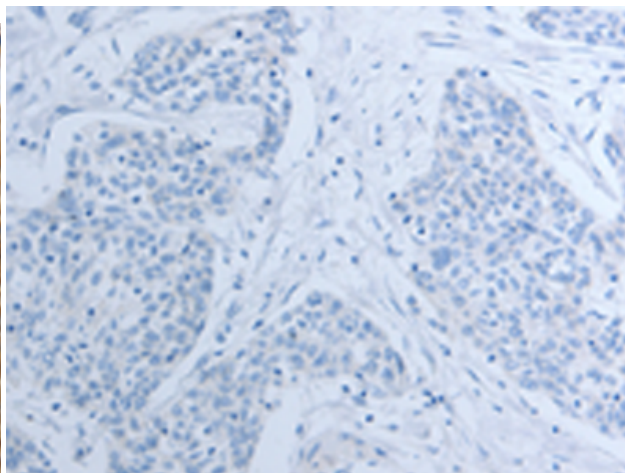
Constituents: PBS (without Mg²⁺ and Ca²⁺), pH 7.4, 150 mM NaCl, 0.05% Sodium Azide and 40% glycerol

Research Areas: Signal Transduction

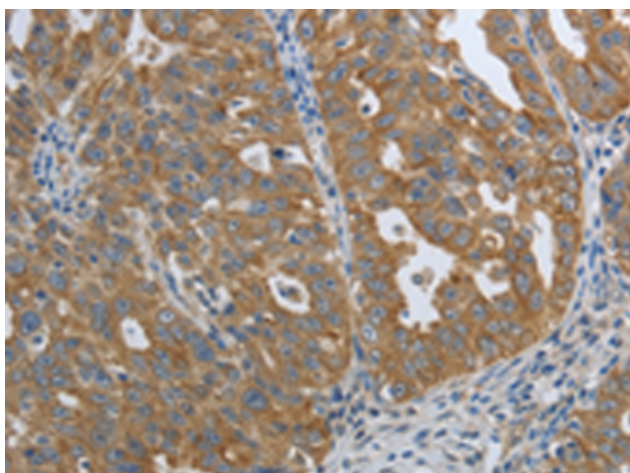
Storage & Shipping: Store at -20°C. Avoid repeated freezing and thawing



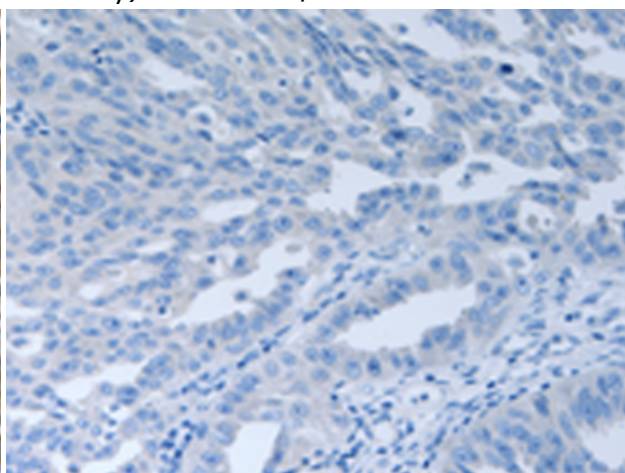
Immunohistochemistry analysis of paraffin embedded Human esophagus cancer tissue using 220184(PTPRM Antibody) at a dilution of 1/80(Cytoplasm).



In comparison with the IHC on the left, the same paraffin-embedded Human esophagus cancer tissue is first treated with the synthetic peptide and then with 220184(Anti-PTPRM Antibody) at dilution 1/80.



The image on the left is immunohistochemistry of paraffin-embedded Human ovarian cancer tissue using 220184(Anti-PTPRM Antibody) at a dilution of 1/80.



In comparison with the IHC on the left, the same paraffin-embedded Human ovarian cancer tissue is first treated with synthetic peptide and then with D261098(Anti-PTPRM Antibody) at dilution 1/80.