

## PULMONARY SURFACTANT ASSOCIATED PROTEIN D RABBIT MAB

**Cat.#:** N262956

**Product Name:** Anti-Pulmonary Surfactant Associated Protein D Rabbit Monoclonal Antibody

**Synonyms:** SP-D; Sfpd; Sftp4; AI573415

**UNIPROT ID:** P50404

**Background:** Contributes to the lung's defense against inhaled microorganisms, organic antigens and toxins. Interacts with compounds such as bacterial lipopolysaccharides, oligosaccharides and fatty acids and modulates leukocyte action in immune response. May participate in the extracellular reorganization or turnover of pulmonary surfactant. Binds strongly maltose residues and to a lesser extent other alpha-glucosyl moieties. Miscellaneous Pulmonary surfactant consists of 90% lipid and 10% protein. There are 4 surfactant-associated proteins: 2 collagenous, carbohydrate-binding glycoproteins (SP-A and SP-D) and 2 small hydrophobic proteins (SP-B and SP-C).

**Immunogen:** Recombinant protein of mouse Surfactant protein D

**Applications:** WB, IHC-P

**Recommended Dilutions:** WB: 1/500-1/1000 IHC: 1/50-1/100

**Host Species:** Rabbit

**Clonality:** Rabbit Monoclonal

**Clone ID:** R06-2B1

**MW:** Calculated MW: 38 kDa; Observed MW: 43 kDa

**Isotype:** IgG

**Purification:** Affinity Purified

**Species Reactivity:** Rat

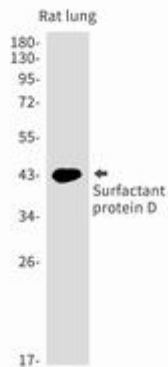
**Conjugation:** Unconjugated

**Modification:** Unmodified

**Constituents:** PBS (without Mg<sup>2+</sup> and Ca<sup>2+</sup>), pH 7.3 containing 50% glycerol, 0.5% BSA and 0.02% sodium azide

**Research Areas:** Immunology

**Storage & Shipping:** Store at -20°C. Avoid repeated freezing and thawing



Western blot analysis of Surfactant protein D in rat lung lysates using Pulmonary Surfactant Associated Protein D antibody.