

PUM1 RABBIT MAB

Cat.#: N262786

Product Name: Anti-PUM1 Rabbit Monoclonal Antibody

Synonyms: HsPUM; PUM L1; Pum1; PUMH 1; PUMH; PUMH1; Pumilio1; PUML1

UNIPROT ID: Q14671

Background: Mediates post-transcriptional repression of transcripts via different mechanisms: acts via direct recruitment of the CCR4-POP2-NOT deadenylase leading to translational inhibition and mRNA degradation.

Immunogen: A synthetic peptide of human Pumilio 1

Applications: WB,IHC-F,IHC-P,ICC/IF,IP

Recommended Dilutions: WB: 1/500-1/1000 IHC: 1/50-1/100 IF: 1/50-1/200 IP: 1/20

Host Species: Rabbit

Clonality: Rabbit Monoclonal

Clone ID: R04-3A6

MW: Calculated MW: 126 kDa; Observed MW: 140 kDa

Isotype: IgG

Purification: Affinity Purified

Species Reactivity: Human,Mouse

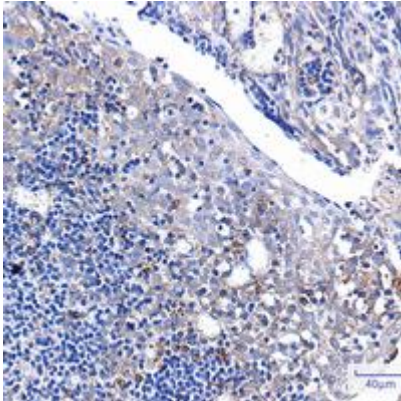
Conjugation: Unconjugated

Modification: Unmodified

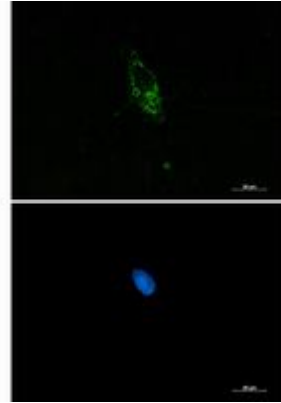
Constituents: PBS (without Mg²⁺ and Ca²⁺), pH 7.3 containing 50% glycerol, 0.5% BSA and 0.02% sodium azide

Research Areas: Epigenetics and Nuclear Signaling

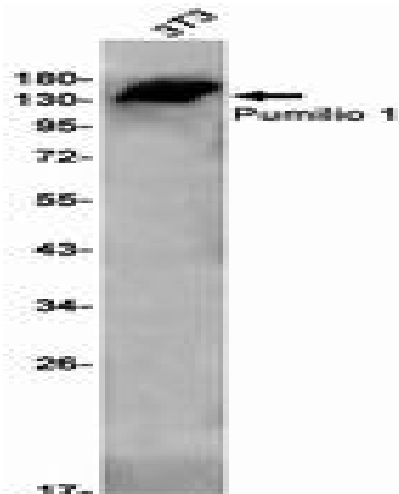
Storage & Shipping: Store at -20°C. Avoid repeated freezing and thawing



Immunohistochemistry analysis of paraffin-embedded Human tonsil using Pumilio 1 antibody. High-pressure and temperature Sodium Citrate pH 6.0 was used for antigen retrieval.



Immunocytochemistry analysis of PUM1 (green) in HCT116 using PUM1 antibody, and DAPI (blue).



Western blot analysis of Pumilio 1 in 3T3 lysates using Pumilio 1 antibody.