

PUM3 RABBIT PAB

Cat.#: S222299

Product Name: Anti-PUM3 Rabbit Polyclonal Antibody

Synonyms: PEN; HA-8; PUF6; XTP5; PUF-A; HLA-HA8; KIAA0020

UNIPROT ID: Q15397 (Gene Accession - NP_055693)

Background: Inhibits the poly(ADP-ribosyl)ation activity of PARP1 and the degradation of PARP1 by CASP3 following genotoxic stress (PubMed:21266351). Binds to double-stranded RNA or DNA without sequence specificity (PubMed:25512524). Involved in development of the eye and of primordial germ cells (By similarity).

Immunogen: Synthetic peptide of human PUM3

Applications: ELISA, WB, IHC

Recommended Dilutions: IHC: 50-200;WB: 1000-5000;ELISA: 5000-10000

Host Species: Rabbit

Clonality: Rabbit Polyclonal

Isotype: Immunogen-specific rabbit IgG

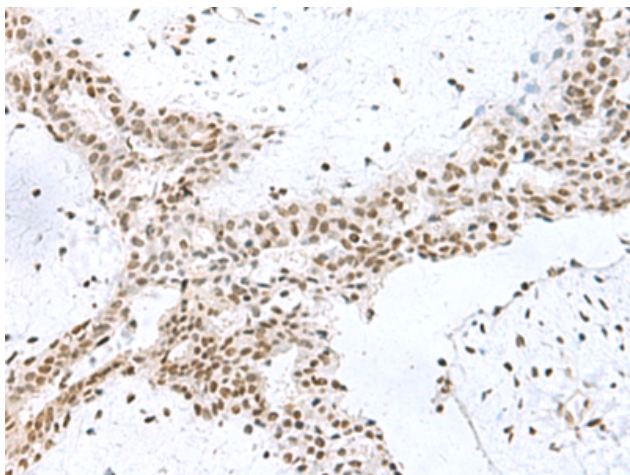
Purification: Antigen affinity purification

Species Reactivity: Human

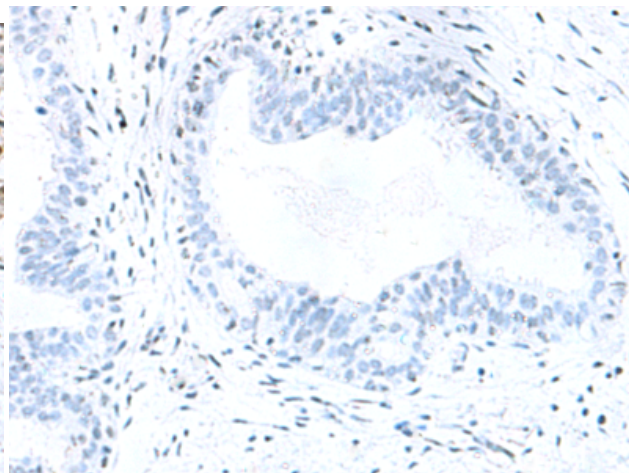
Constituents: PBS (without Mg²⁺ and Ca²⁺), pH 7.4, 150 mM NaCl, 0.05% Sodium Azide and 40% glycerol

Research Areas: Cell Biology

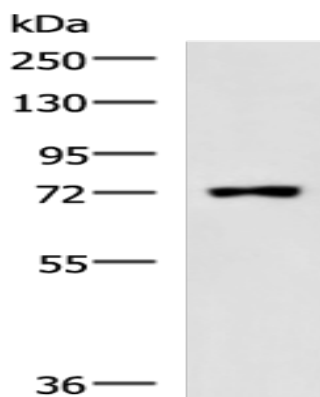
Storage & Shipping: Store at -20°C. Avoid repeated freezing and thawing



Immunohistochemistry analysis of paraffin embedded Human breast cancer tissue using 222299(PUM3 Antibody) at a dilution of 1/80(Nucleus).



In comparison with the IHC on the left, the same paraffin-embedded Human breast cancer tissue is first treated with the synthetic peptide and then with 222299(Anti-PUM3 Antibody) at dilution 1/80.



Gel: 8%SDS-PAGE, Lysate: 40 μ g;
Lane: Raji cell lysate ;
Primary antibody: 222299(PUM3 Antibody) at dilution 1/800;
Secondary antibody: HRP-conjugated Goat anti rabbit IgG at 1/5000 dilution;
Exposure time: 1 minute