

## PUMA RABBIT MAB

**Cat.#:** N262785

**Product Name:** Anti-PUMA Rabbit Monoclonal Antibody

**Synonyms:** BBC3; PUMA; Bcl-2-binding component 3; JFY-1; p53 up-regulated modulator of apoptosis

**UNIPROT ID:** Q9BXH1

**Background:** Essential mediator of p53/TP53-dependent and p53/TP53-independent apoptosis. Functions by promoting partial unfolding of BCL2L1 and dissociation of BCL2L1 from p53/TP53. Regulates ER stress-induced neuronal apoptosis.

**Immunogen:** A synthetic peptide of human PUMA

**Applications:** WB,IHC-F,IHC-P,ICC/IF

**Recommended Dilutions:** WB: 1/500-1/1000 IHC: 1/50-1/100 IF: 1/50-1/200

**Host Species:** Rabbit

**Clonality:** Rabbit Monoclonal

**Clone ID:** R05-9C7

**MW:** Calculated MW: 21 kDa; Observed MW: 21 kDa

**Isotype:** IgG

**Purification:** Affinity Purified

**Species Reactivity:** Human,Mouse,Rat

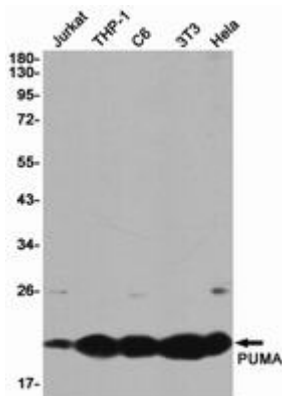
**Conjugation:** Unconjugated

**Modification:** Unmodified

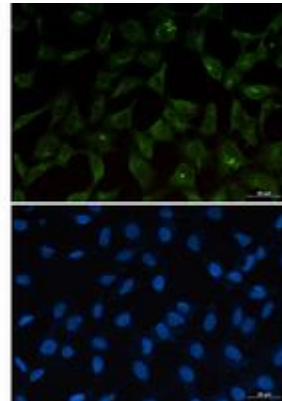
**Constituents:** PBS (without Mg<sup>2+</sup> and Ca<sup>2+</sup>), pH 7.3 containing 50% glycerol, 0.5% BSA and 0.02% sodium azide

**Research Areas:** apoptosis - Bcl-2 family

**Storage & Shipping:** Store at -20°C. Avoid repeated freezing and thawing



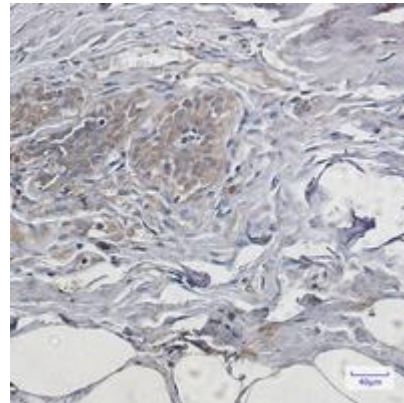
Western blot analysis of PUMA in Jurkat, THP-1, C6, 3T3, HeLa lysates using PUMA antibody



Immunocytochemistry analysis of PUMA (green) in 293T using PUMA antibody, and DAPI (blue).



Western blot analysis of PUMA in K562 lysates using PUMA antibody.



Immunohistochemistry analysis of paraffin-embedded Human breast cancer using PUMA antibody. High-pressure and temperature Sodium Citrate pH 6.0 was used for antigen retrieval.