

## PUS1 RABBIT MAB

**Cat.#:** N262787

**Product Name:** Anti-PUS1 Rabbit Monoclonal Antibody

**Synonyms:** MLASA1

**UNIPROT ID:** Q9Y606

**Background:** Converts specific uridines to PSI in a number of tRNA substrates. Acts on positions 27/28 in the anticodon stem and also positions 34 and 36 in the anticodon of an intron containing tRNA. Involved in regulation of nuclear receptor activity through pseudouridylation of SRA1 RNA.

**Immunogen:** Recombinant protein of human PUS1

**Applications:** WB, ICC/IF, IP

**Recommended Dilutions:** WB: 1/500-1/1000 IF: 1/50-1/200 IP: 1/20

**Host Species:** Rabbit

**Clonality:** Rabbit Monoclonal

**Clone ID:** R02-0A2

**MW:** Calculated MW: 47 kDa; Observed MW: 44,47 kDa

**Isotype:** IgG

**Purification:** Affinity Purified

**Species Reactivity:** Human, Hamster, Rat

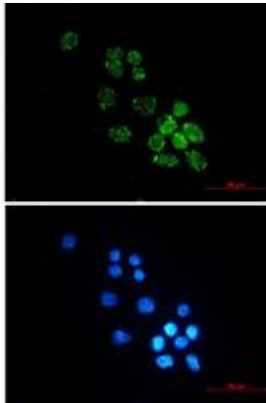
**Conjugation:** Unconjugated

**Modification:** Unmodified

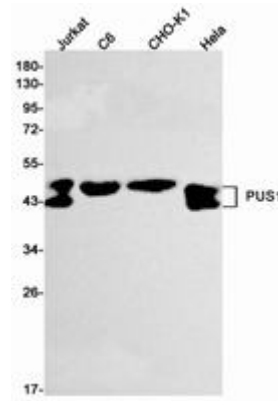
**Constituents:** PBS (without Mg<sup>2+</sup> and Ca<sup>2+</sup>), pH 7.3 containing 50% glycerol, 0.5% BSA and 0.02% sodium azide

**Research Areas:** Epigenetics and Nuclear Signaling

**Storage & Shipping:** Store at -20°C. Avoid repeated freezing and thawing



Immunocytochemistry analysis of PUS1 (green) in MCF-7 using PUS1 antibody, and DAPI (blue)



Western blot analysis of PUS1 in Jurkat, C6, CHO-K1, HeLa lysates using PUS1 antibody.