

PVALB RABBIT PAB

Cat.#: S210567

Product Name: Anti-PVALB Rabbit Polyclonal Antibody

Synonyms: D22S749

UNIPROT ID: P20472 (Gene Accession - BC069300)

Background: Parvalbumin is a calcium-binding albumin protein with low molecular weight (typically 9–11 kDa). It has three EF hand motifs and is structurally related to calmodulin and troponin C.

Parvalbumin is localised in fast-contracting muscles, where its levels are highest, and in the brain and some endocrine tissues. Parvalbumin is a small, stable protein containing EF-hand type calcium binding sites. It is involved in calcium signaling. Typically, this protein is broken into three domains, domains AB, CD and EF, each individually containing a helix-loop-helix motif.

Immunogen: Fusion protein of human PVALB

Applications: ELISA, WB, IHC

Recommended Dilutions: IHC: 25–100;WB: 200–1000;ELISA: 1000–5000

Host Species: Rabbit

Clonality: Rabbit Polyclonal

Isotype: Immunogen-specific rabbit IgG

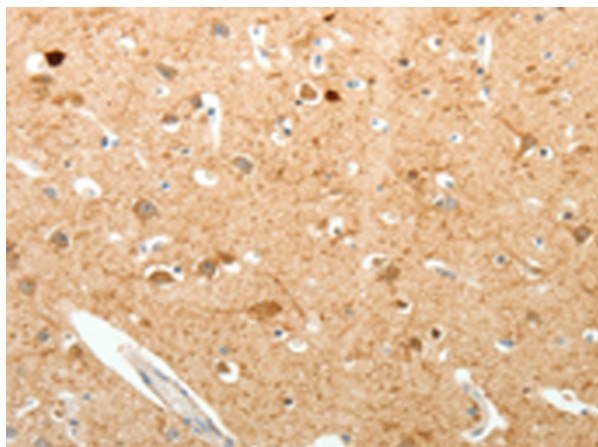
Purification: Antigen affinity purification

Species Reactivity: Human, Mouse, Rat

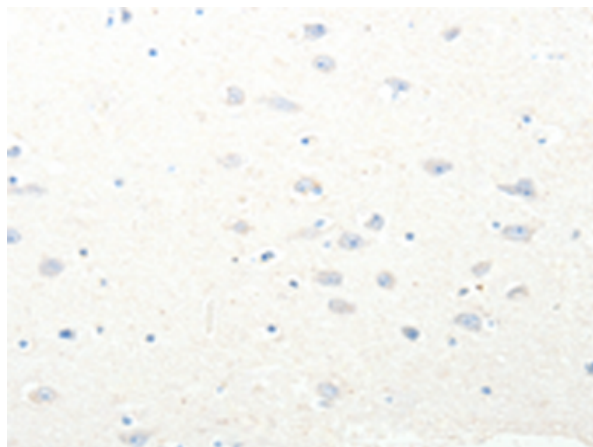
Constituents: PBS (without Mg²⁺ and Ca²⁺), pH 7.4, 150 mM NaCl, 0.05% Sodium Azide and 40% glycerol

Research Areas: Neuroscience

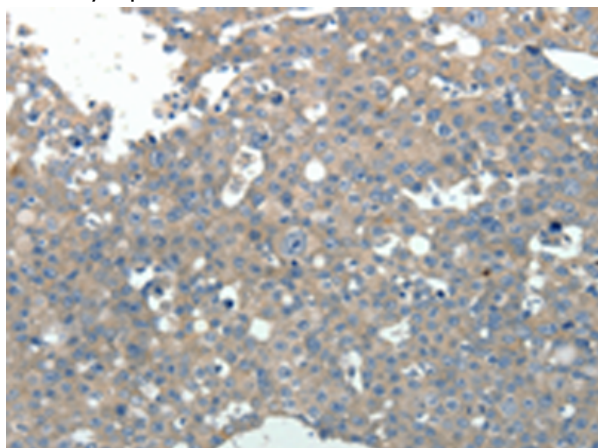
Storage & Shipping: Store at -20°C. Avoid repeated freezing and thawing



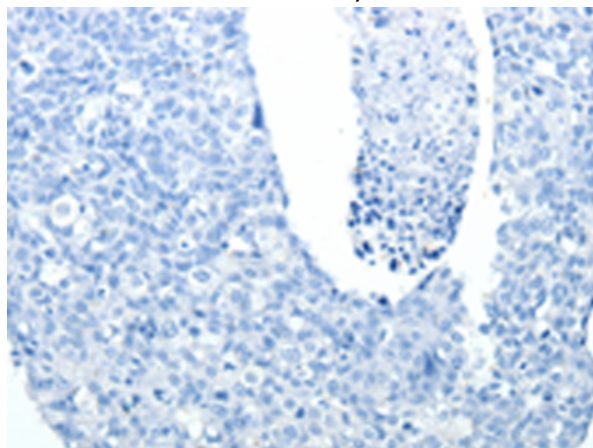
Immunohistochemistry analysis of paraffin embedded Human brain tissue using 210567(PVALB Antibody) at a dilution of 1/20(Cytoplasm).



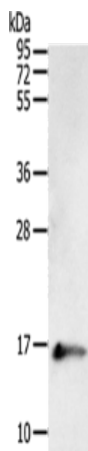
In comparison with the IHC on the left, the same paraffin-embedded Human brain tissue is first treated with the fusion protein and then with 210567(Anti-PVALB Antibody) at dilution 1/20.



The image on the left is immunohistochemistry of paraffin-embedded Human breast cancer tissue using 210567(Anti-PVALB Antibody) at a dilution of 1/20.



In comparison with the IHC on the left, the same paraffin-embedded Human breast cancer tissue is first treated with fusion protein and then with D121187(Anti-PVALB Antibody) at dilution 1/20.



Gel: 12%SDS-PAGE, Lysate: 50 µg;
Lane: Human fetal brain tissue;
Primary antibody: 210567(PVALB Antibody) at dilution 1/400;
Secondary antibody: Goat anti rabbit IgG at 1/8000 dilution;
Exposure time: 1 minute



Product Description

Pioneering GTPase and Oncogene Product Development since 2010
