

PYM1 RABBIT PAB

Cat.#: S215310

Product Name: Anti-PYM1 Rabbit Polyclonal Antibody

Synonyms: PYM; WIBG

UNIPROT ID: Q9BRP8 (Gene Accession - NP_115721)

Background: Enables ribosome binding activity. Involved in exon-exon junction complex disassembly; nuclear-transcribed mRNA catabolic process, nonsense-mediated decay; and positive regulation of translation. Located in cell junction; cytosol; and nuclear lumen. Part of exon-exon junction complex. [provided by Alliance of Genome Resources, Apr 2022]

Immunogen: Synthetic peptide of human PYM1

Applications: ELISA, IHC

Recommended Dilutions: IHC: 50-100; ELISA: 5000-10000

Host Species: Rabbit

Clonality: Rabbit Polyclonal

Isotype: Immunogen-specific rabbit IgG

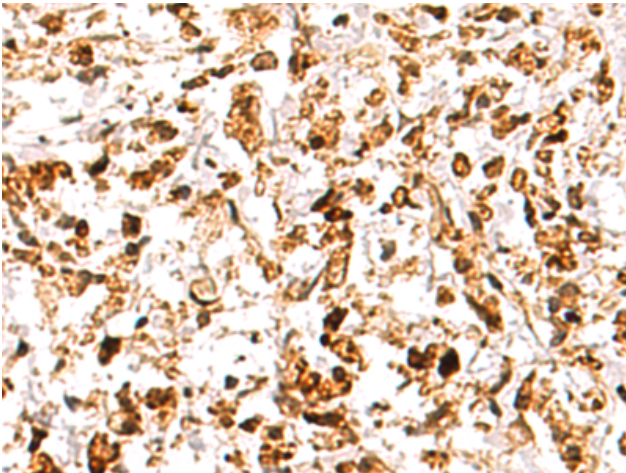
Purification: Antigen affinity purification

Species Reactivity: Human, Mouse

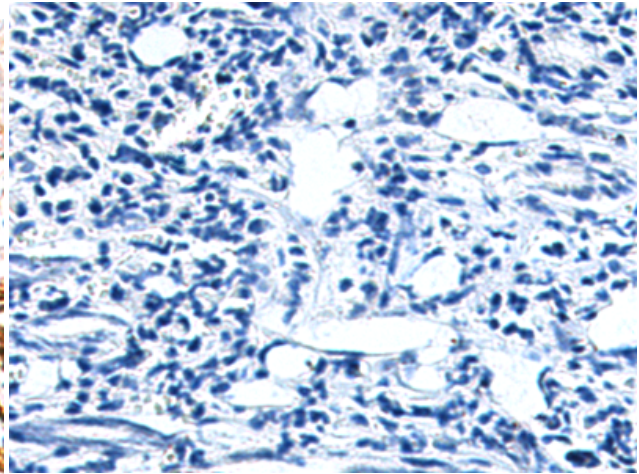
Constituents: PBS (without Mg²⁺ and Ca²⁺), pH 7.4, 150 mM NaCl, 0.05% Sodium Azide and 40% glycerol

Research Areas: Epigenetics and Nuclear Signaling

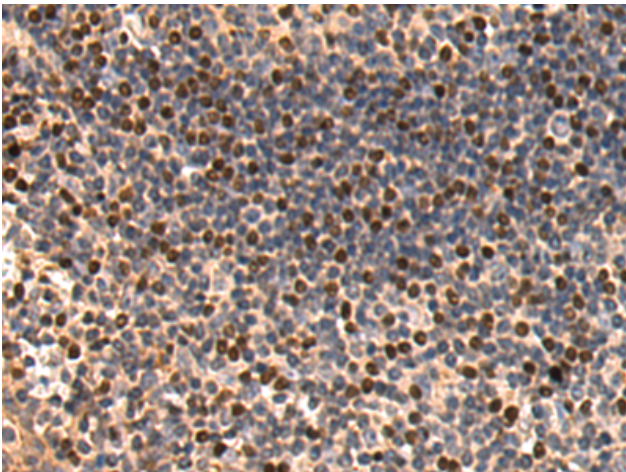
Storage & Shipping: Store at -20°C. Avoid repeated freezing and thawing



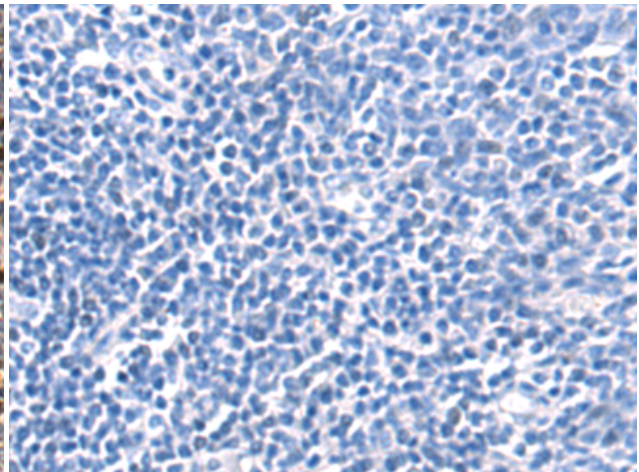
Immunohistochemistry analysis of paraffin embedded Human gastric cancer tissue using 215310(PYMI Antibody) at a dilution of 1/30(Cytoplasm and Nucleus).



In comparison with the IHC on the left, the same paraffin-embedded Human gastric cancer tissue is first treated with the synthetic peptide and then with 215310(Anti-PYMI Antibody) at dilution 1/30.



The image on the left is immunohistochemistry of paraffin-embedded Human tonsil tissue using 215310(Anti-PYMI Antibody) at a dilution of 1/30.



In comparison with the IHC on the left, the same paraffin-embedded Human tonsil tissue is first treated with synthetic peptide and then with D163193(Anti-PYMI Antibody) at dilution 1/30.