

RAB22A RABBIT PAB

Cat.#: S219625

Product Name: Anti-RAB22A Rabbit Polyclonal Antibody

Synonyms:

UNIPROT ID: Q9UL26 (Gene Accession - NP_065724)

Background: The protein encoded by this gene is a member of the RAB family of small GTPases. The GTP-bound form of the encoded protein has been shown to interact with early-endosomal antigen 1, and may be involved in the trafficking of and interaction between endosomal compartments.

Immunogen: Synthetic peptide of human RAB22A

Applications: ELISA, WB, IHC

Recommended Dilutions: IHC: 50-200;WB: 200-1000;ELISA: 1000-5000

Host Species: Rabbit

Clonality: Rabbit Polyclonal

Isotype: Immunogen-specific rabbit IgG

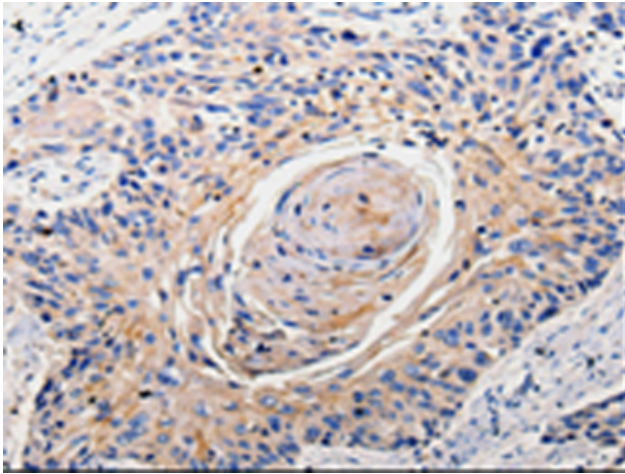
Purification: Antigen affinity purification

Species Reactivity: Human, Mouse

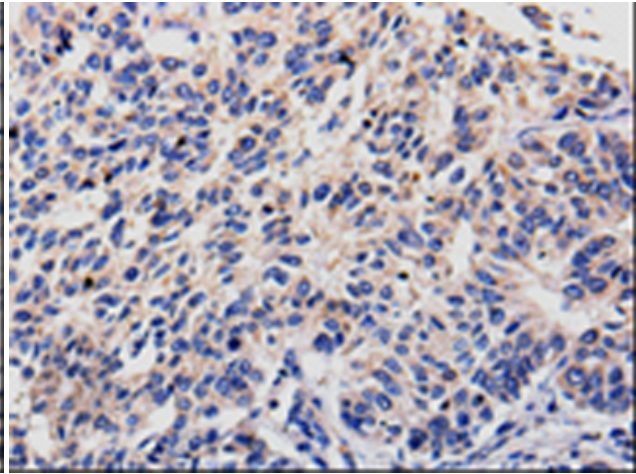
Constituents: PBS (without Mg²⁺ and Ca²⁺), pH 7.4, 150 mM NaCl, 0.05% Sodium Azide and 40% glycerol

Research Areas: Signal Transduction

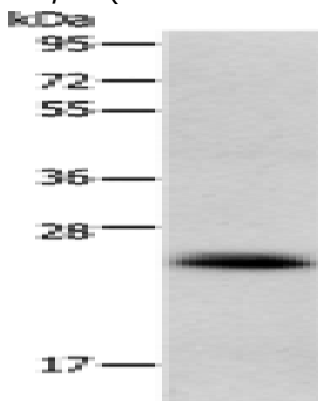
Storage & Shipping: Store at -20°C. Avoid repeated freezing and thawing



Immunohistochemistry analysis of paraffin-embedded Human esophagus cancer tissue using 219625(RAB22A Antibody) at a dilution of 1/100(Cell membrane, Cytoplasm).



Immunohistochemistry analysis of paraffin-embedded Human lung cancer tissue using 219625(Anti-RAB22A Antibody) at a dilution of 1/100.



Gel: 12%SDS-PAGE, Lysate: 40 μ g;
Lane: Mouse heart tissue;
Primary antibody: 219625(RAB22A Antibody)
at dilution 1/300;
Secondary antibody: Goat anti rabbit IgG at
1/8000 dilution;
Exposure time: 10 seconds