

## RAB2B RABBIT PAB

**Cat.#:** N225501

**Product Name:** Anti-Rab2B Rabbit pAb

**Synonyms:** Ras-related protein Rab-2B

**UNIPROT ID:** Q8WUDI

**Background:** Required for protein transport from the endoplasmic reticulum to the Golgi complex.

**Immunogen:** The antiserum was produced against synthesized peptide derived from human RAB2B. AA range:103-152

**Applications:** WB,ELISA

**Recommended Dilutions:** WB: 1/500-1/1000 ELISA: 1/10000

**Host Species:** Rabbit

**Clonality:** Rabbit Polyclonal

**Clone ID:** -

**MW:** Calculated MW: 24 kDa; Observed MW: 24 kDa

**Isotype:** IgG

**Purification:** Affinity Chromatography

**Species Reactivity:** Human,Mouse,Rat

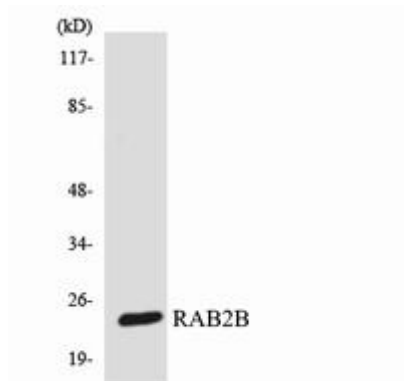
**Conjugation:** Unconjugated

**Modification:** Unmodified

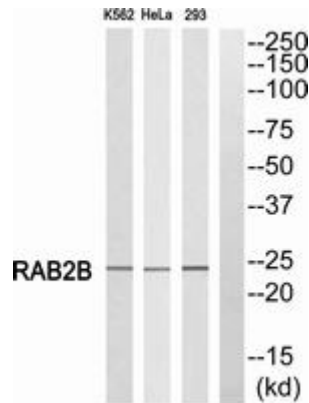
**Constituents:** PBS (without Mg<sup>2+</sup> and Ca<sup>2+</sup>), pH 7.3 containing 50% glycerol, 0.5% BSA and 0.02% sodium azide

**Research Areas:** Signal Transduction

**Storage & Shipping:** Store at -20°C. Avoid repeated freezing and thawing



Western blot analysis of Rab2B in 293 lysates using RAB2B antibody.



Western blot analysis of Rab2B in K562, HeLa, 293 lysates using RAB2B antibody. The lane on the right is blocked with the RAB2B peptide.