

## RAB32 RABBIT PAB

**Cat.#:** S219586

**Product Name:** Anti-RAB32 Rabbit Polyclonal Antibody

**Synonyms:**

**UNIPROT ID:** Q13637 (Gene Accession - BC015061 )

**Background:** The protein encoded by this gene anchors the type II regulatory subunit of protein kinase A to the mitochondrion and aids in mitochondrial fission. The encoded protein also appears to be involved in autophagy and melanosome secretion. Variations in this gene may be linked to leprosy.

**Immunogen:** Fusion protein of human RAB32

**Applications:** ELISA, WB, IHC

**Recommended Dilutions:** IHC: 50-200;WB: 1000-5000;ELISA: 5000-10000

**Host Species:** Rabbit

**Clonality:** Rabbit Polyclonal

**Isotype:** Immunogen-specific rabbit IgG

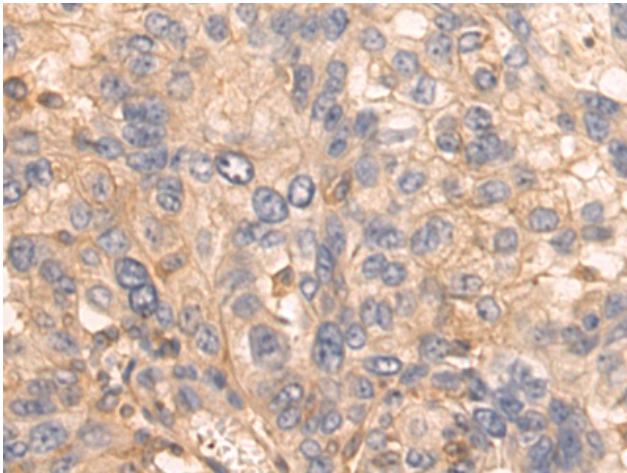
**Purification:** Antigen affinity purification

**Species Reactivity:** Human, Mouse

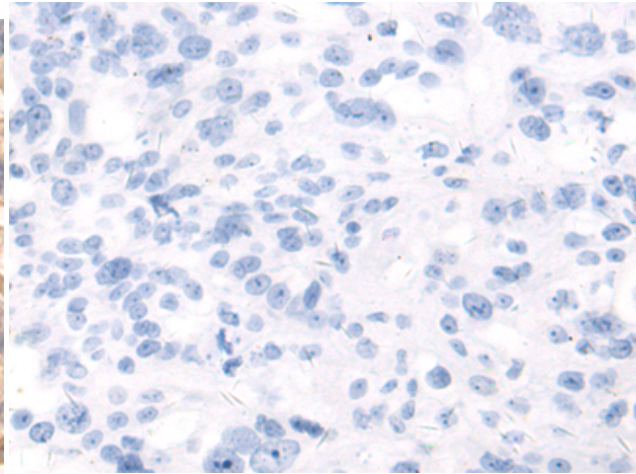
**Constituents:** PBS (without Mg<sup>2+</sup> and Ca<sup>2+</sup>), pH 7.4, 150 mM NaCl, 0.05% Sodium Azide and 40% glycerol

**Research Areas:** Signal Transduction

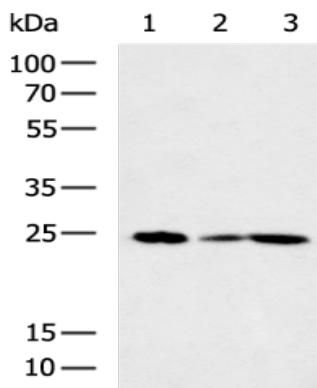
**Storage & Shipping:** Store at -20°C. Avoid repeated freezing and thawing



Immunohistochemistry analysis of paraffin embedded Human breast cancer tissue using 219586(RAB32 Antibody) at a dilution of 1/70(Cytoplasm).



In comparison with the IHC on the left, the same paraffin-embedded Human breast cancer tissue is first treated with the fusion protein and then with 219586(Anti-RAB32 Antibody) at dilution 1/70.



Gel: 12%SDS-PAGE, Lysate: 40 µg;  
Lane 1-3: U251, HepG2, HeLa cell lysates;  
Primary antibody: 219586(RAB32 Antibody) at dilution 1/1100;  
Secondary antibody: HRP-conjugated Goat anti rabbit IgG at 1/5000 dilution;  
Exposure time: 10 seconds