

## RAB35 RABBIT PAB

**Cat.#:** S219628

**Product Name:** Anti-RAB35 Rabbit Polyclonal Antibody

**Synonyms:** RAY; H-ray; RABIC

**UNIPROT ID:** Q15286 (Gene Accession - NP\_006852 )

**Background:** Enables GTPase activity; guanyl ribonucleotide binding activity; and phosphatidylinositol-4,5-bisphosphate binding activity. Involved in several processes, including endosomal transport; plasma membrane to endosome transport; and protein localization to endosome. Located in several cellular components, including clathrin-coated endocytic vesicle; clathrin-coated pit; and intercellular bridge.

**Immunogen:** Synthetic peptide of human RAB35

**Applications:** ELISA, WB, IHC

**Recommended Dilutions:** IHC: 50-200;WB: 500-2000;ELISA: 2000-10000

**Host Species:** Rabbit

**Clonality:** Rabbit Polyclonal

**Isotype:** Immunogen-specific rabbit IgG

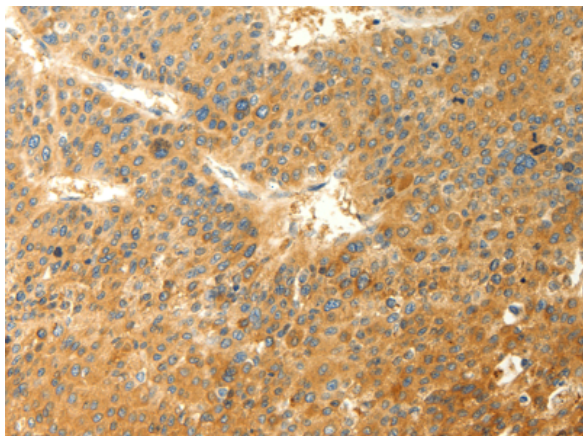
**Purification:** Antigen affinity purification

**Species Reactivity:** Human, Mouse, Rat

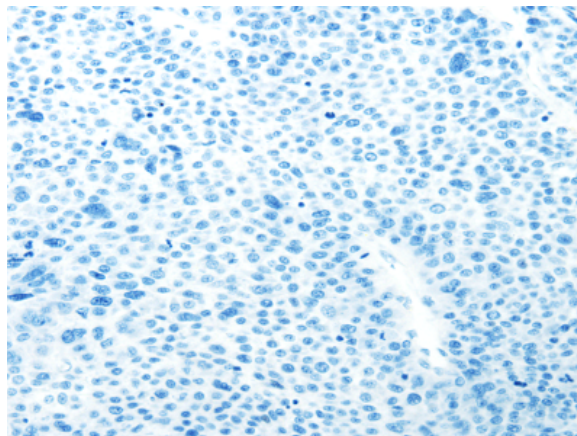
**Constituents:** PBS (without Mg<sup>2+</sup> and Ca<sup>2+</sup>), pH 7.4, 150 mM NaCl, 0.05% Sodium Azide and 40% glycerol

**Research Areas:** Signal Transduction, Cancer

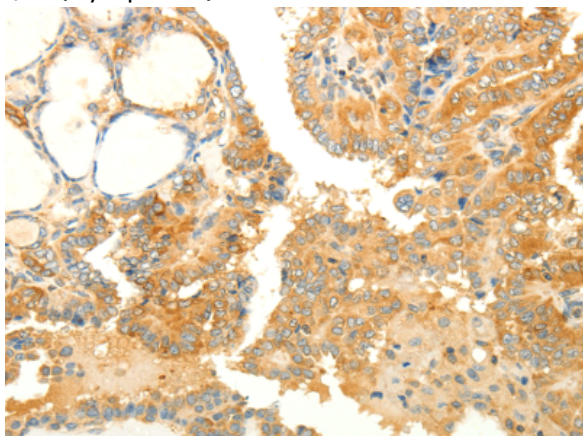
**Storage & Shipping:** Store at -20°C. Avoid repeated freezing and thawing



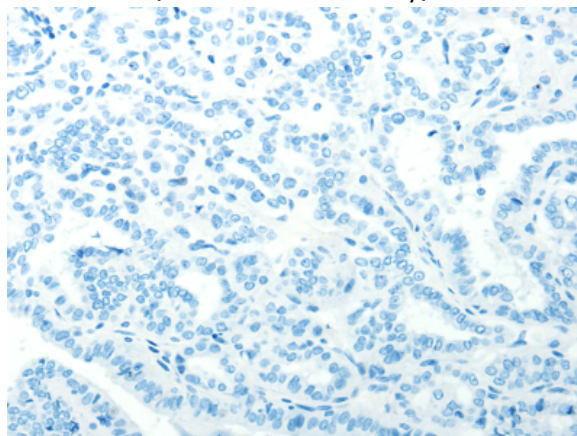
Immunohistochemistry analysis of paraffin embedded Human liver cancer tissue using 219628(RAB35 Antibody) at a dilution of 1/40(Cytoplasm).



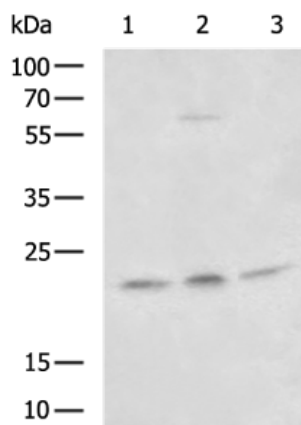
In comparison with the IHC on the left, the same paraffin-embedded Human liver cancer tissue is first treated with the synthetic peptide and then with 219628(Anti-RAB35 Antibody) at dilution 1/40.



The image on the left is immunohistochemistry of paraffin-embedded Human thyroid cancer tissue using 219628(Anti-RAB35 Antibody) at a dilution of 1/40.



In comparison with the IHC on the left, the same paraffin-embedded Human thyroid cancer tissue is first treated with synthetic peptide and then with D260039(Anti-RAB35 Antibody) at dilution 1/40.



Gel: 12%SDS-PAGE, Lysate: 40 µg;  
 Lane 1-3: Mouse brain tissue, 293T, NIH/3T3 cell lysates;  
 Primary antibody: 219628(RAB35 Antibody) at dilution 1/800;  
 Secondary antibody: HRP-conjugated Goat anti rabbit IgG at 1/5000 dilution;  
 Exposure time: 10 seconds



# Product Description

Pioneering GTPase and Oncogene Product Development since 2010

---