

RAB38 RABBIT PAB

Cat.#: S219262

Product Name: Anti-RAB38 Rabbit Polyclonal Antibody

Synonyms: rrGTPbp; NY-MEL-1

UNIPROT ID: P57729 (Gene Accession - BC015808)

Background: May be involved in melanosomal transport and docking. Involved in the proper sorting of TYRP1. Involved in peripheral melanosomal distribution of TYRP1 in melanocytes; the function, which probably is implicating vesicle-trafficcking, includes cooperation with ANKRD27 and VAMP7 (By similarity). Plays a role in the maturation of phagosomes that engulf pathogens, such as S.aureus and M.tuberculosis (PubMed:21255211). Plays an important role in the control of melanin production and melanosome biogenesis (PubMed:23084991). In concert with RAB32, regulates the proper trafficking of melanogenic enzymes TYR, TYRP1 and DCT/TYRP2 to melanosomes in melanocytes (By similarity).

Immunogen: Fusion protein of human RAB38

Applications: ELISA, WB, IHC

Recommended Dilutions: IHC: 50-200;WB: 500-2000;ELISA: 5000-10000

Host Species: Rabbit

Clonality: Rabbit Polyclonal

Isotype: Immunogen-specific rabbit IgG

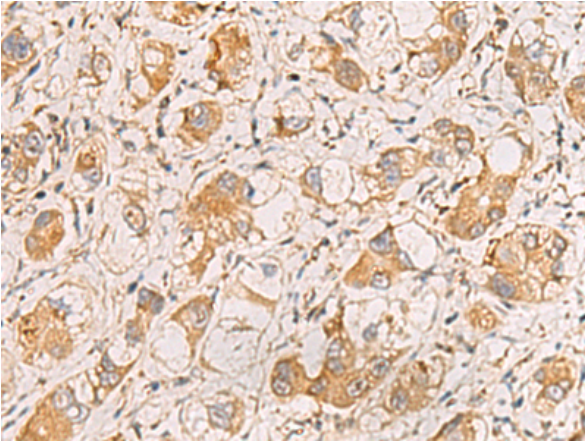
Purification: Antigen affinity purification

Species Reactivity: Human, Mouse

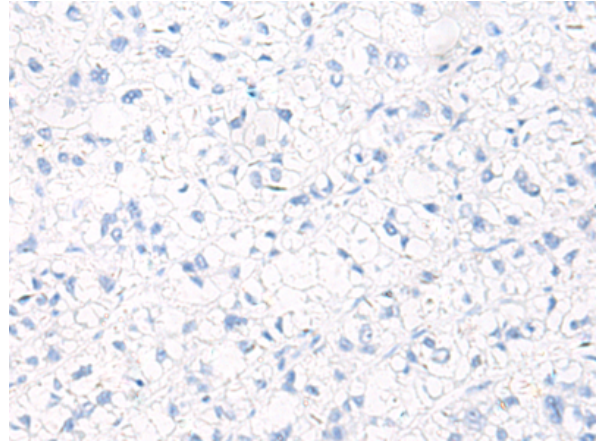
Constituents: PBS (without Mg²⁺ and Ca²⁺), pH 7.4, 150 mM NaCl, 0.05% Sodium Azide and 40% glycerol

Research Areas: Signal Transduction

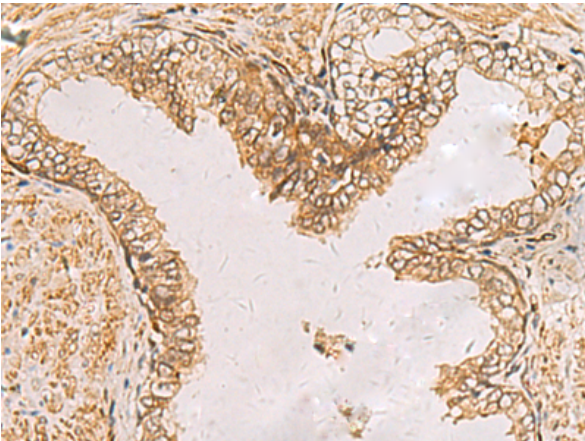
Storage & Shipping: Store at -20°C. Avoid repeated freezing and thawing



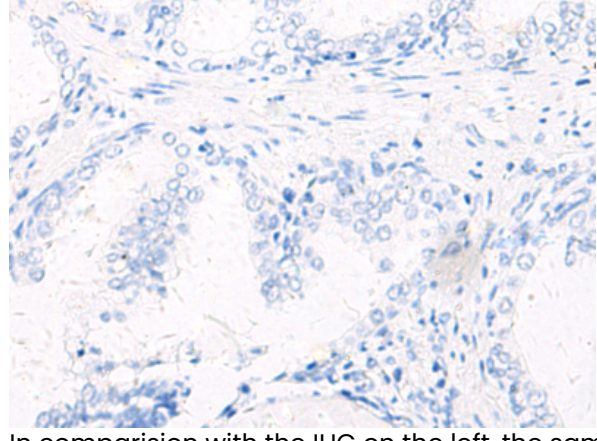
Immunohistochemistry analysis of paraffin embedded Human liver cancer tissue using 219262(RAB38 Antibody) at a dilution of 1/60(Cytoplasm).



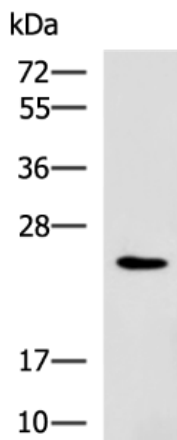
In comparison with the IHC on the left, the same paraffin-embedded Human liver cancer tissue is first treated with the fusion protein and then with 219262(Anti-RAB38 Antibody) at dilution 1/60.



The image on the left is immunohistochemistry of paraffin-embedded Human prostate cancer tissue using 219262(Anti-RAB38 Antibody) at a dilution of 1/60.



In comparison with the IHC on the left, the same paraffin-embedded Human prostate cancer tissue is first treated with fusion protein and then with D226148(Anti-RAB38 Antibody) at dilution 1/60.



Gel: 12%SDS-PAGE, Lysate: 40 µg;
Lane: NIH/3T3 cell lysate;
Primary antibody: 219262(RAB38 Antibody) at dilution 1/900;
Secondary antibody: HRP-conjugated Goat anti rabbit IgG at 1/5000 dilution;
Exposure time: 1 minute



Product Description

Pioneering GTPase and Oncogene Product Development since 2010
