

RAB39A RABBIT PAB

Cat.#: S219269

Product Name: Anti-RAB39A Rabbit Polyclonal Antibody

Synonyms: RAB39

UNIPROT ID: Q14964 (Gene Accession - BC028064)

Background: Plays a role in the maturation and acidification of phagosomes that engulf pathogens, such as S.aureus and M.tuberculosis. Plays a role in vesicular trafficking. Plays a role in the fusion of phagosomes with lysosomes. Negatively regulates LPS-induced autophagosome formation in macrophages possibly by implicating PI3K. May be involved in multiple neurite formation.

Immunogen: Fusion protein of human RAB39A

Applications: ELISA, WB, IHC

Recommended Dilutions: IHC: 50-200;WB: 200-1000;ELISA: 5000-10000

Host Species: Rabbit

Clonality: Rabbit Polyclonal

Isotype: Immunogen-specific rabbit IgG

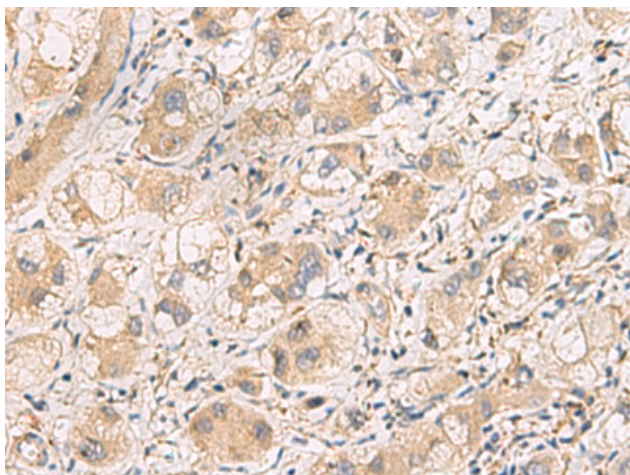
Purification: Antigen affinity purification

Species Reactivity: Human, Mouse

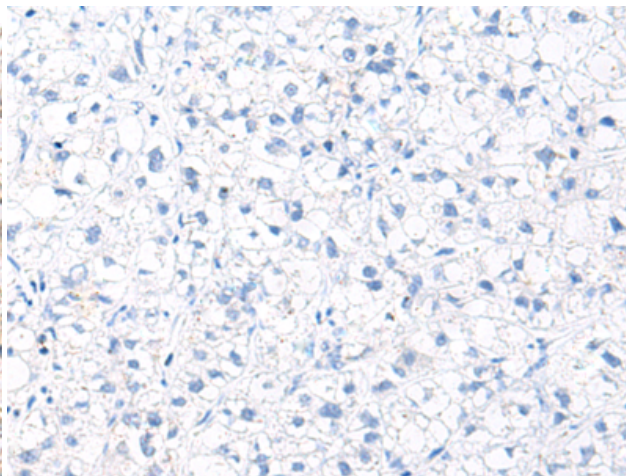
Constituents: PBS (without Mg²⁺ and Ca²⁺), pH 7.4, 150 mM NaCl, 0.05% Sodium Azide and 40% glycerol

Research Areas: Signal Transduction

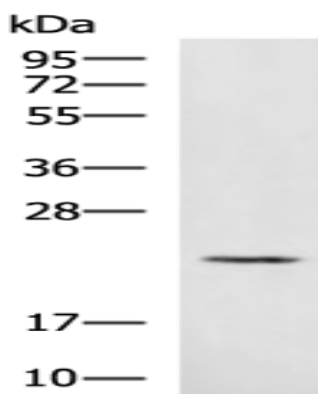
Storage & Shipping: Store at -20°C. Avoid repeated freezing and thawing



Immunohistochemistry analysis of paraffin embedded Human liver cancer tissue using 219269(RAB39A Antibody) at a dilution of 1/70(Cytoplasm).



In comparison with the IHC on the left, the same paraffin-embedded Human liver cancer tissue is first treated with the fusion protein and then with 219269(Anti-RAB39A Antibody) at dilution 1/70.



Gel: 12%SDS-PAGE, Lysate: 40 μ g;
Lane: Mouse brain tissue lysate;
Primary antibody: 219269(RAB39A Antibody)
at dilution 1/500;
Secondary antibody: HRP-conjugated Goat
anti rabbit IgG at 1/5000 dilution;
Exposure time: 2 minutes