

RAB39B RABBIT PAB

Cat.#: S220747

Product Name: Anti-RAB39B Rabbit Polyclonal Antibody

Synonyms: MRX72

UNIPROT ID: Q96DA2 (Gene Accession - NP_741995)

Background: This gene encodes a member of the Rab family of proteins. Rab proteins are small GTPases that are involved in vesicular trafficking. Mutations in this gene are associated with X-linked mental retardation.

Immunogen: Synthetic peptide of human RAB39B

Applications: ELISA, IHC

Recommended Dilutions: IHC: 50-200; ELISA: 2000-5000

Host Species: Rabbit

Clonality: Rabbit Polyclonal

Isotype: Immunogen-specific rabbit IgG

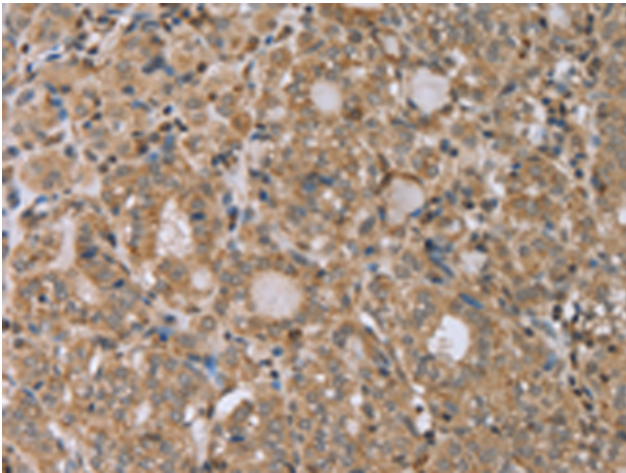
Purification: Antigen affinity purification

Species Reactivity: Human, Mouse

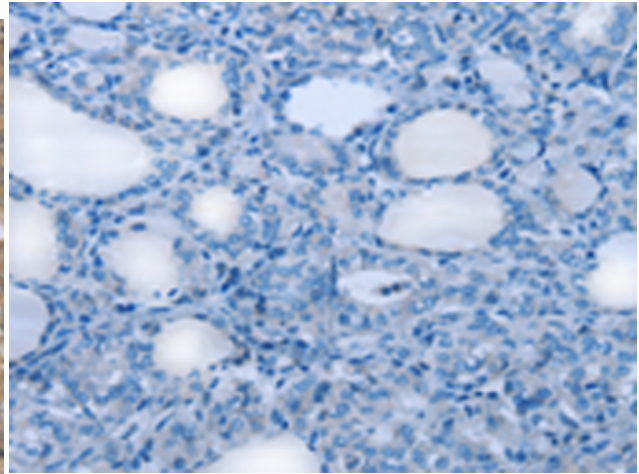
Constituents: PBS (without Mg²⁺ and Ca²⁺), pH 7.4, 150 mM NaCl, 0.05% Sodium Azide and 40% glycerol

Research Areas: Signal Transduction

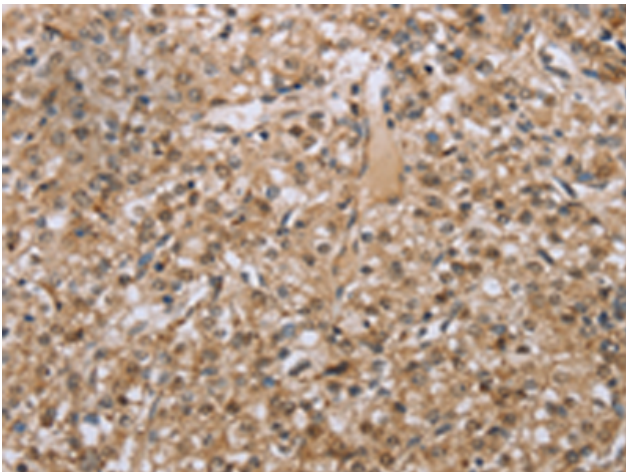
Storage & Shipping: Store at -20°C. Avoid repeated freezing and thawing



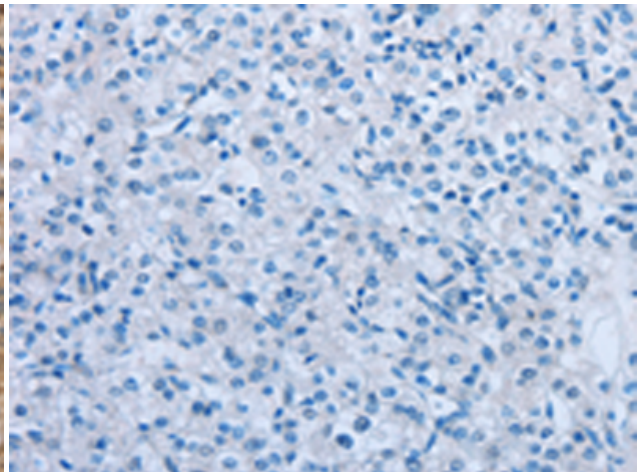
Immunohistochemistry analysis of paraffin-embedded Human thyroid cancer tissue using 220747 (RAB39B Antibody) at a dilution of 1/45 (Cytoplasm).



In comparison with the IHC on the left, the same paraffin-embedded Human thyroid cancer tissue is first treated with the synthetic peptide and then with 220747 (Anti-RAB39B Antibody) at dilution 1/45.



The image on the left is immunohistochemistry of paraffin-embedded Human prostate cancer tissue using 220747 (Anti-RAB39B Antibody) at a dilution of 1/45.



In comparison with the IHC on the left, the same paraffin-embedded Human prostate cancer tissue is first treated with synthetic peptide and then with D261954 (Anti-RAB39B Antibody) at dilution 1/45.