

RAB3C RABBIT PAB

Cat.#: S219640

Product Name: Anti-RAB3C Rabbit Polyclonal Antibody

Synonyms:

UNIPROT ID: Q96E17 (Gene Accession - NP_612462)

Background: This gene is a member of the RAS oncogene family and encodes a small GTPase. Other similar small GTPases are known to be involved in vesicle trafficking, and the encoded protein was shown to play a role in recycling phagocytosed MHC class I complexes to the cell surface. Two transcript variants encoding different isoforms have been found for this gene.

Immunogen: Synthetic peptide of human RAB3C

Applications: ELISA, WB, IHC

Recommended Dilutions: IHC: 25-100;WB: 500-2000;ELISA: 2000-10000

Host Species: Rabbit

Clonality: Rabbit Polyclonal

Isotype: Immunogen-specific rabbit IgG

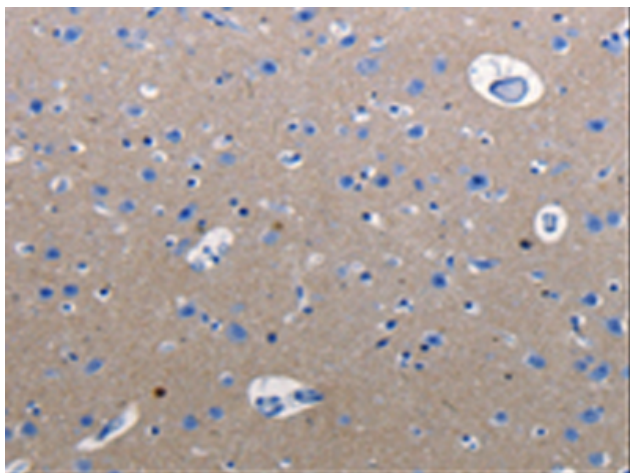
Purification: Antigen affinity purification

Species Reactivity: Human, Mouse, Rat

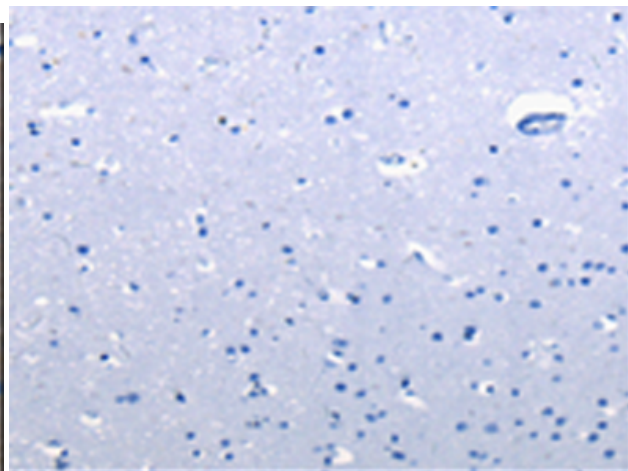
Constituents: PBS (without Mg²⁺ and Ca²⁺), pH 7.4, 150 mM NaCl, 0.05% Sodium Azide and 40% glycerol

Research Areas: Signal Transduction

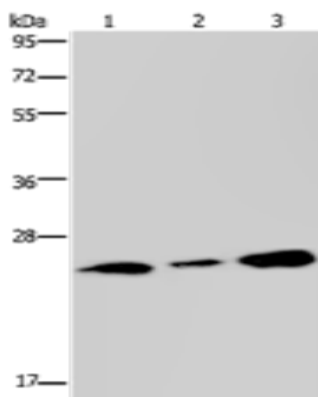
Storage & Shipping: Store at -20°C. Avoid repeated freezing and thawing



Immunohistochemistry analysis of paraffin embedded Human cervical cancer tissue using 219640(RAB3C Antibody) at a dilution of 1/25(Cell membrane, Cytoplasm).



In comparison with the IHC on the left, the same paraffin-embedded Human cervical cancer tissue is first treated with the synthetic peptide and then with 219640(Anti-RAB3C Antibody) at dilution 1/25.



Gel: 10%SDS-PAGE, Lysate: 40 µg;
Lane 1-2: Human fetal brain tissue, 293T cells;
Primary antibody: 219640(RAB3C Antibody) at dilution 1/400;
Secondary antibody: Goat anti rabbit IgG at 1/8000 dilution;
Exposure time: 1 minute