

RAB3D RABBIT PAB

Cat.#: S213358

Product Name: Anti-RAB3D Rabbit Polyclonal Antibody

Synonyms: GOV; D2-2; RAB16; RAD3D

UNIPROT ID: O95716 (Gene Accession - NP_004274)

Background: Protein transport. Probably involved in regulated exocytosis (By similarity).

Immunogen: Synthetic peptide of human RAB3D

Applications: ELISA, IHC

Recommended Dilutions: IHC: 25-100; ELISA: 1000-10000

Host Species: Rabbit

Clonality: Rabbit Polyclonal

Isotype: Immunogen-specific rabbit IgG

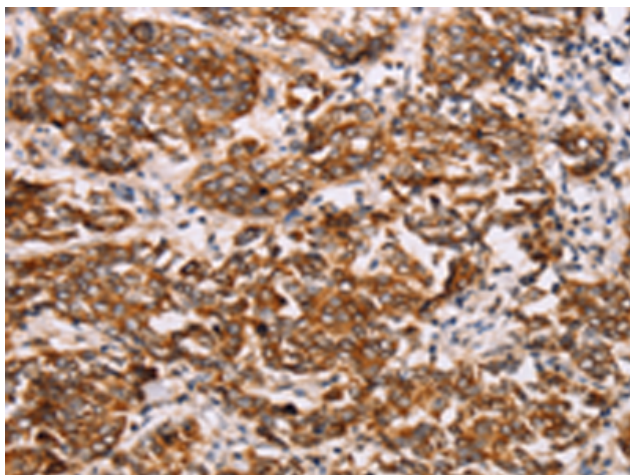
Purification: Antigen affinity purification

Species Reactivity: Human, Mouse, Rat

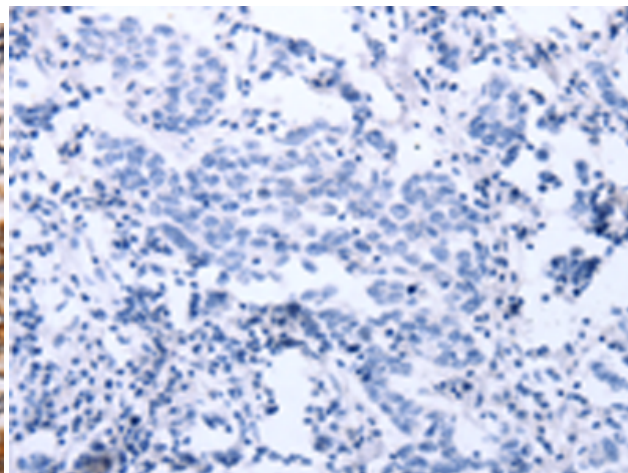
Constituents: PBS (without Mg²⁺ and Ca²⁺), pH 7.4, 150 mM NaCl, 0.05% Sodium Azide and 40% glycerol

Research Areas: Signal Transduction

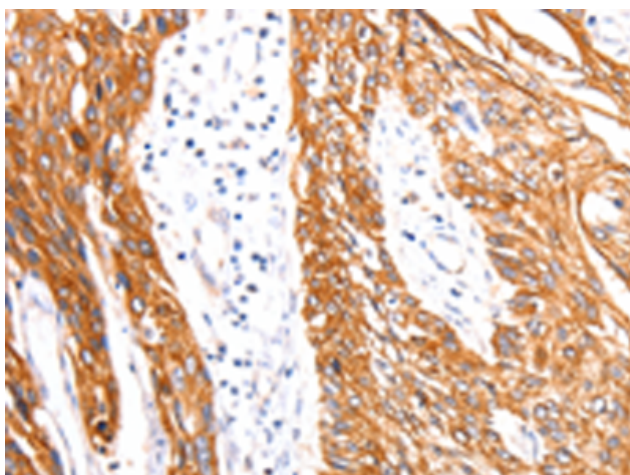
Storage & Shipping: Store at -20°C. Avoid repeated freezing and thawing



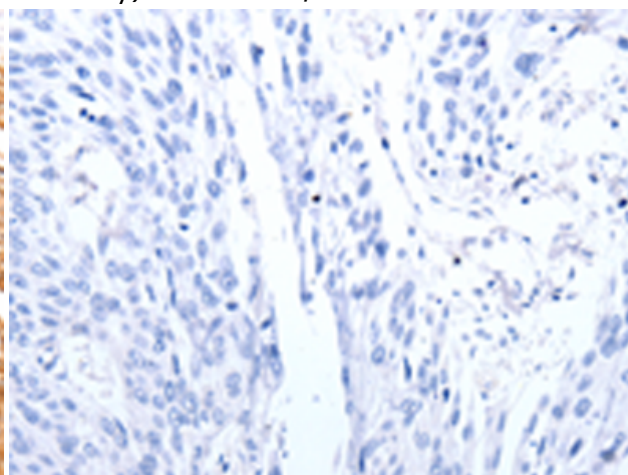
Immunohistochemistry analysis of paraffin embedded Human breast cancer tissue using 213358(RAB3D Antibody) at a dilution of 1/27(Cytoplasm, Cell membrane).



In comparison with the IHC on the left, the same paraffin-embedded Human breast cancer tissue is first treated with the synthetic peptide and then with 213358(Anti-RAB3D Antibody) at dilution 1/27.



The image on the left is immunohistochemistry of paraffin-embedded Human esophagus cancer tissue using 213358(Anti-RAB3D Antibody) at a dilution of 1/27.



In comparison with the IHC on the left, the same paraffin-embedded Human esophagus cancer tissue is first treated with synthetic peptide and then with D160066(Anti-RAB3D Antibody) at dilution 1/27.