

RAB45 RABBIT MAB

Cat.#: N262794

Product Name: Anti-Rab45 Rabbit Monoclonal Antibody

Synonyms: Ras-related protein Rab-45

UNIPROT ID: Q8IZ41

Background: Binds predominantly GDP, and also GTP.

Immunogen: A synthetic peptide of human RAB45

Applications: WB, ICC/IF

Recommended Dilutions: WB: 1/500-1/1000 IF: 1/50-1/200

Host Species: Rabbit

Clonality: Rabbit Monoclonal

Clone ID: R03-1G6

MW: Calculated MW: 83 kDa; Observed MW: 83 kDa

Isotype: IgG

Purification: Affinity Purified

Species Reactivity: Human, Mouse

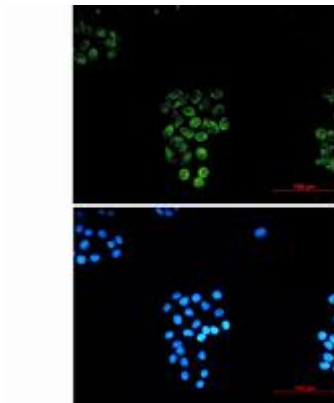
Conjugation: Unconjugated

Modification: Unmodified

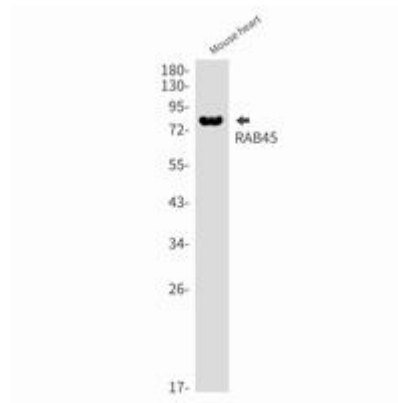
Constituents: PBS (without Mg²⁺ and Ca²⁺), pH 7.3 containing 50% glycerol, 0.5% BSA and 0.02% sodium azide

Research Areas: Signal Transduction

Storage & Shipping: Store at -20°C. Avoid repeated freezing and thawing



Immunocytochemistry analysis of RAB45 (green) in HeLa using RAB45 antibody, and DAPI (blue)



Western blot analysis of RAB45 in mouse heart lysates using Rab45 antibody.



Western blot analysis of RAB45 in Jurkat lysates using RAB45 antibody.