

RAB6A RABBIT PAB

Cat.#: S213363

Product Name: Anti-RAB6A Rabbit Polyclonal Antibody

Synonyms: RAB6

UNIPROT ID: P20340 (Gene Accession - NP_002860)

Background: This gene encodes a member of the RAB family, which belongs to the small GTPase superfamily. GTPases of the RAB family bind to various effectors to regulate the targeting and fusion of transport carriers to acceptor compartments. This protein is located at the Golgi apparatus, which regulates trafficking in both a retrograde (from early endosomes and Golgi to the endoplasmic reticulum) and an anterograde (from the Golgi to the plasma membrane) directions. Myosin II is an effector of this protein in these processes. This protein is also involved in assembly of human cytomegalovirus (HCMV) by interacting with the cellular protein Bicaudal D1, which interacts with the HCMV virion tegument protein, pp150. Multiple alternatively spliced transcript variants encoding different isoforms have been identified.

Immunogen: Synthetic peptide of human RAB6A

Applications: ELISA, WB, IHC

Recommended Dilutions: IHC: 25-100;WB: 500-2000;ELISA: 2000-10000

Host Species: Rabbit

Clonality: Rabbit Polyclonal

Isotype: Immunogen-specific rabbit IgG

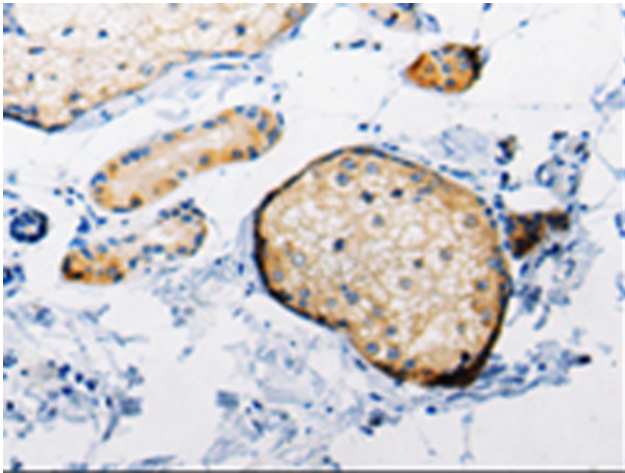
Purification: Antigen affinity purification

Species Reactivity: Human, Mouse, Rat

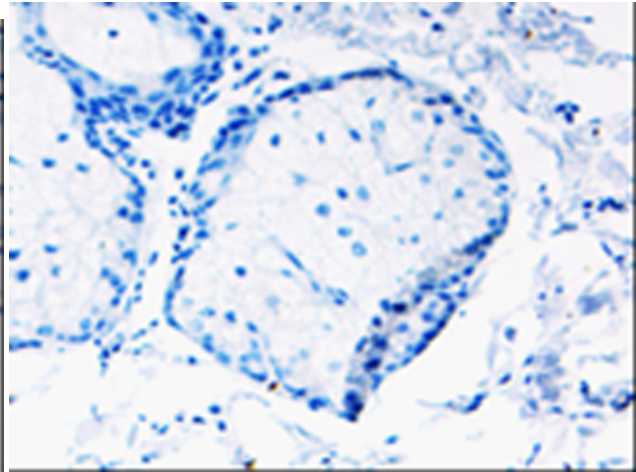
Constituents: PBS (without Mg²⁺ and Ca²⁺), pH 7.4, 150 mM NaCl, 0.05% Sodium Azide and 40% glycerol

Research Areas: Signal Transduction

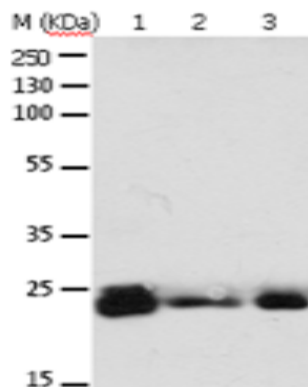
Storage & Shipping: Store at -20°C. Avoid repeated freezing and thawing



Immunohistochemistry analysis of paraffin embedded Human skin tissue using 213363(RAB6A Antibody) at a dilution of 1/25(Cytoplasm).



In comparison with the IHC on the left, the same paraffin-embedded Human skin tissue is first treated with the synthetic peptide and then with 213363(Anti-RAB6A Antibody) at dilution 1/25.



Gel: 10%SDS-PAGE, Lysate: 30 µg;
 Lane 1-6: 293T cells, mouse brain tissue, A549 cells, Hela cells, A172 cells, HT29 cells;
 Primary antibody: 213363(RAB6A Antibody) at dilution 1/650;
 Secondary antibody: Goat anti rabbit IgG at 1/8000 dilution;
 Exposure time: 1 minute