

RAB8A RABBIT MAB

Cat.#: N261563

Product Name: Anti-Rab8A Rabbit Monoclonal Antibody

Synonyms: RAB8A; member RAS oncogene family; MEL; RAB8

UNIPROT ID: P61006

Background: The small GTPases Rab are key regulators of intracellular membrane trafficking, from the formation of transport vesicles to their fusion with membranes.

Immunogen: A synthetic peptide of human RAB8A

Applications: WB,IHC-F,IHC-P,ICC/IF

Recommended Dilutions: WB: 1/500-1/1000 IHC: 1/50-1/100 IF: 1/50-1/200

Host Species: Rabbit

Clonality: Rabbit Monoclonal

Clone ID: R06-8A7

MW: Calculated MW: 24 kDa; Observed MW: 24 kDa

Isotype: IgG

Purification: Affinity Purified

Species Reactivity: Human,Mouse,Rat

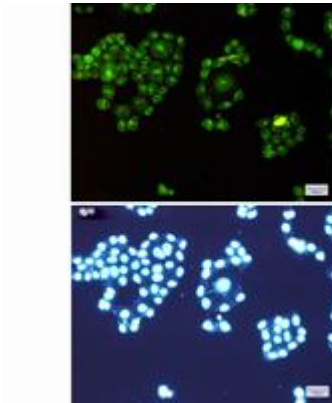
Conjugation: Unconjugated

Modification: Unmodified

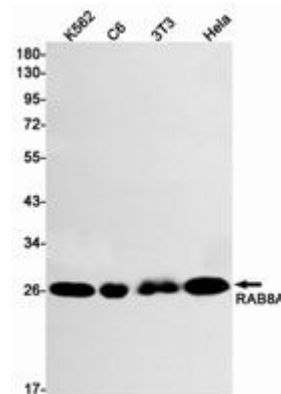
Constituents: PBS (without Mg²⁺ and Ca²⁺), pH 7.3 containing 50% glycerol, 0.5% BSA and 0.02% sodium azide

Research Areas: Signal Transduction

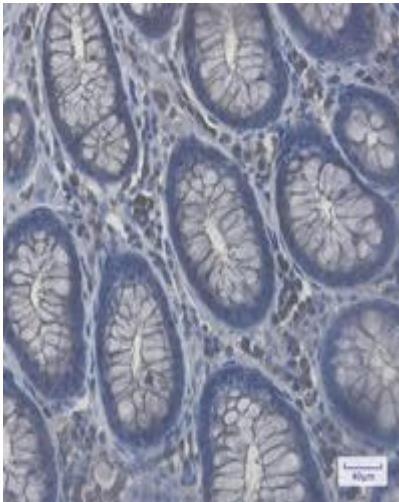
Storage & Shipping: Store at -20°C. Avoid repeated freezing and thawing



Immunocytochemistry analysis of Rab8A (green) in HeLa using Rab8A antibody, and DAPI (blue)



Western blot analysis of RAB8A in K562, C6, 3T3, HeLa lysates using Rab8A antibody.



Immunohistochemistry analysis of paraffin-embedded Human colon cancer using RAB8A antibody. High-pressure and temperature Sodium Citrate pH 6.0 was used for antigen retrieval.