

RAB8B RABBIT PAB

Cat.#: S220840

Product Name: Anti-RAB8B Rabbit Polyclonal Antibody

Synonyms:

UNIPROT ID: Q92930 (Gene Accession - NP_057614)

Background: RAB proteins, like RAB8B, are low molecular mass monomeric GTPases that localize on the cytoplasmic surfaces of distinct membrane-bound organelles. RAB proteins function in intracellular vesicle transport by aiding in the docking and/or fusion of vesicles with their target membranes.

Immunogen: Synthetic peptide of human RAB8B

Applications: ELISA, WB, IHC

Recommended Dilutions: IHC: 30-150;WB: 200-1000;ELISA: 2000-5000

Host Species: Rabbit

Clonality: Rabbit Polyclonal

Isotype: Immunogen-specific rabbit IgG

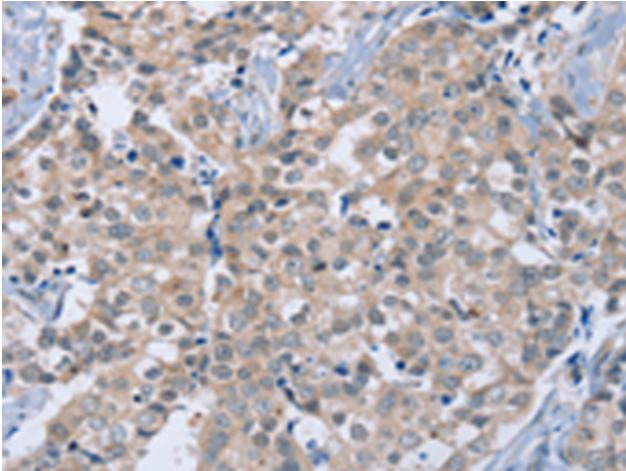
Purification: Antigen affinity purification

Species Reactivity: Human, Mouse, Rat

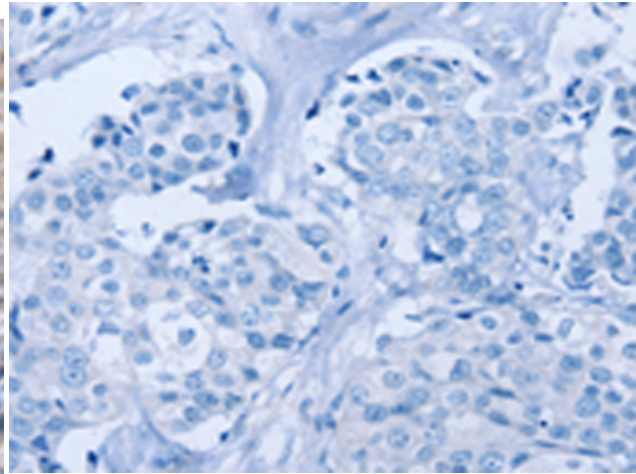
Constituents: PBS (without Mg²⁺ and Ca²⁺), pH 7.4, 150 mM NaCl, 0.05% Sodium Azide and 40% glycerol

Research Areas: Signal Transduction

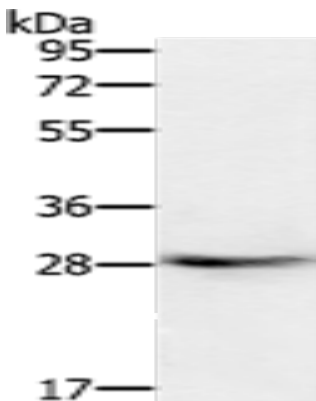
Storage & Shipping: Store at -20°C. Avoid repeated freezing and thawing



Immunohistochemistry analysis of paraffin embedded Human breast cancer tissue using 220840 (RAB8B Antibody) at a dilution of 1/40 (Cytoplasm and Cell membrane).



In comparison with the IHC on the left, the same paraffin-embedded Human breast cancer tissue is first treated with the synthetic peptide and then with 220840 (Anti-RAB8B Antibody) at dilution 1/40.



Gel: 8% SDS-PAGE, Lysate: 80 μ g;
Lane: Human normal colon tissue;
Primary antibody: 220840 (RAB8B Antibody) at dilution 1/400;
Secondary antibody: Goat anti rabbit IgG at 1/8000 dilution;
Exposure time: 4 minutes