

## RAB9 RABBIT MAB

**Cat.#:** N262800

**Product Name:** Anti-Rab9 Rabbit Monoclonal Antibody

**Synonyms:** RAB9A; DmRab9; Ras related protein Rab 9A

**UNIPROT ID:** P51151

**Background:** Involved in the transport of proteins between the endosomes and the trans Golgi network. Interacts (preferentially in its GTP-bound form) with GCC2 (via its GRIP domain).

**Immunogen:** A synthetic peptide of human Rab9

**Applications:** WB,IHC-P

**Recommended Dilutions:** WB: 1/500-1/1000 IHC: 1/50-1/100

**Host Species:** Rabbit

**Clonality:** Rabbit Monoclonal

**Clone ID:** R09-718

**MW:** Calculated MW: 23 kDa; Observed MW: 23 kDa

**Isotype:** IgG

**Purification:** Affinity Purified

**Species Reactivity:** Human,Mouse

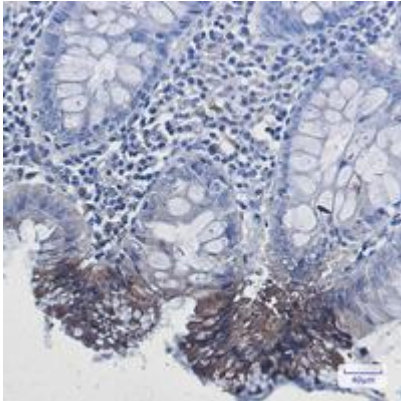
**Conjugation:** Unconjugated

**Modification:** Unmodified

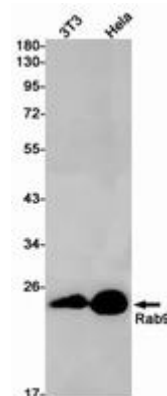
**Constituents:** PBS (without Mg<sup>2+</sup> and Ca<sup>2+</sup>), pH 7.3 containing 50% glycerol, 0.5% BSA and 0.02% sodium azide

**Research Areas:** Tags & Cell Markers

**Storage & Shipping:** Store at -20°C. Avoid repeated freezing and thawing



Immunohistochemistry analysis of paraffin-embedded Human colon cancer using Rab9 antibody. High-pressure and temperature Sodium Citrate pH 6.0 was used for antigen retrieval.



Western blot analysis of Rab9 in 3T3, Hela lysates using Rab9 antibody.