

## RAB9 RABBIT PAB

**Cat.#:** N225640

**Product Name:** Anti-Rab9 Rabbit pAb

**Synonyms:** RAB9A; DmRab9; Ras related protein Rab 9A

**UNIPROT ID:** P51151

**Background:** Involved in the transport of proteins between the endosomes and the trans Golgi network. Interacts (preferentially in its GTP-bound form) with GCC2 (via its GRIP domain).

**Immunogen:** A synthesized peptide derived from human Rab9

**Applications:** WB, ICC/IF

**Recommended Dilutions:** WB: 1/500-1/1000 IF: 1/50-1/200

**Host Species:** Rabbit

**Clonality:** Rabbit Polyclonal

**Clone ID:** -

**MW:** Calculated MW: 23 kDa; Observed MW: 23 kDa

**Isotype:** IgG

**Purification:** Affinity Chromatography

**Species Reactivity:** Human, Mouse, Rat

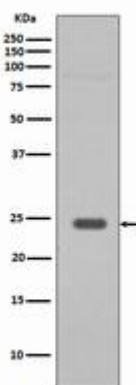
**Conjugation:** Unconjugated

**Modification:** Unmodified

**Constituents:** PBS (without Mg<sup>2+</sup> and Ca<sup>2+</sup>), pH 7.3 containing 50% glycerol, 0.5% BSA and 0.02% sodium azide

**Research Areas:** Tags & Cell Markers

**Storage & Shipping:** Store at -20°C. Avoid repeated freezing and thawing



Western blot analysis of Rab9 in HepG2 lysates using Rab9 antibody.



# Product Description

Pioneering GTPase and Oncogene Product Development since 2010

---