

RABBIT IGG (5B2) MOUSE MAB

Cat.#: N261136

Product Name: Anti-Rabbit IgG (5B2) Mouse Monoclonal Antibody

Synonyms: Antibody; Ig gamma chain C region; Ig kappa-b4 chain C region; Ig kappa-b5 chain C region; Ig kappa-b9 chain C region; Ig lambda chain C region; K-BAS.

UNIPROT ID: -

Background: Constant region of immunoglobulin heavy chains. Immunoglobulins, also known as antibodies, are membrane-bound or secreted glycoproteins produced by B lymphocytes.

Immunogen: Rabbit IgG

Applications: WB,ELISA

Recommended Dilutions: WB: 1/500-1/1000 ELISA: 1/10000

Host Species: Mouse

Clonality: Mouse Monoclonal

Clone ID: 5B2-F9-D6

MW: Calculated MW: 55,25 kDa; Observed MW: 55,25 kDa

Isotype: IgG1

Purification: Affinity Purified

Species Reactivity: Rabbit

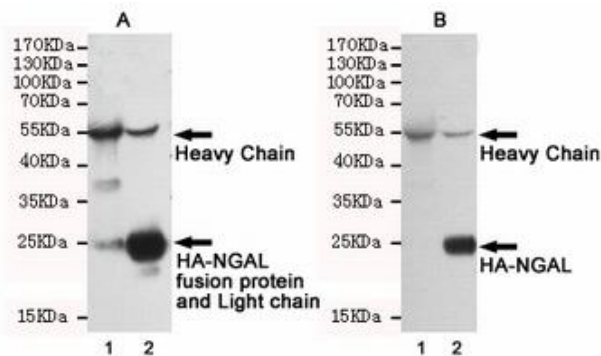
Conjugation: Unconjugated

Modification: Unmodified

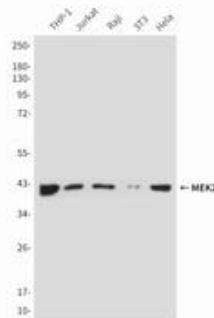
Constituents: PBS (without Mg²⁺ and Ca²⁺), pH 7.3 containing 50% glycerol, 0.5% BSA and 0.02% sodium azide

Research Areas: Immunology

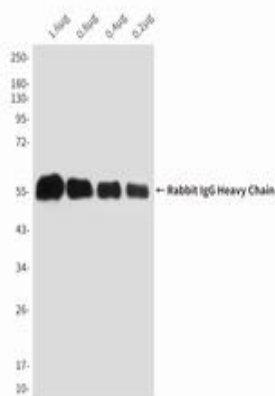
Storage & Shipping: Store at -20°C. Avoid repeated freezing and thawing



Immunoprecipitation analysis of Rabbit IgG (5B2) in CHO-K1 lysates transfected with HA-tagged NGAL using HATag antibody (lane 2). Lane 1 contains rabbit IgG IP control lysates. All lanes are probed with HATag antibody as the primary antibody. Panel A incubated with secondary antibodies anti-rabbit whole IgG, HRPlinked antibody for detecting. Panel B incubated with anti-rabbit IgG (HeavyChain Specific) mAb and the Anti-mouse whole IgG, HRPlinked antibody was used for detecting.



Western blot analysis of MEK2 in THP-1, Jurkat, Raji, 3T3 and Hela lysates using MEK2 antibody, then incubated with N261136 (Rabbit IgG mAb). Anti-mouse IgG, HRPlinked antibody was used for detecting.



Western blot analysis of Rabbit IgG (5B2) in decreasing concentrations of total rabbit IgG reduced and denatured in 2X SDS loading buffer with DTT using IgG (HeavyChain Specific) antibody.